



流体输送综合解决方案  
及集成系统供应商  
始于1957

[www.sanlianpump.com](http://www.sanlianpump.com)



COMPREHENSIVE SAMPLE  
SANLIAN PUMP

**综合样本**

三联泵业股份有限公司  
SANLIANPUMP INDUSTRY CO.,LTD

地址: 安徽省马鞍山市和县经济开发区  
(Add): Economic Development Zone He County,  
Maanshan, Anhui Province.

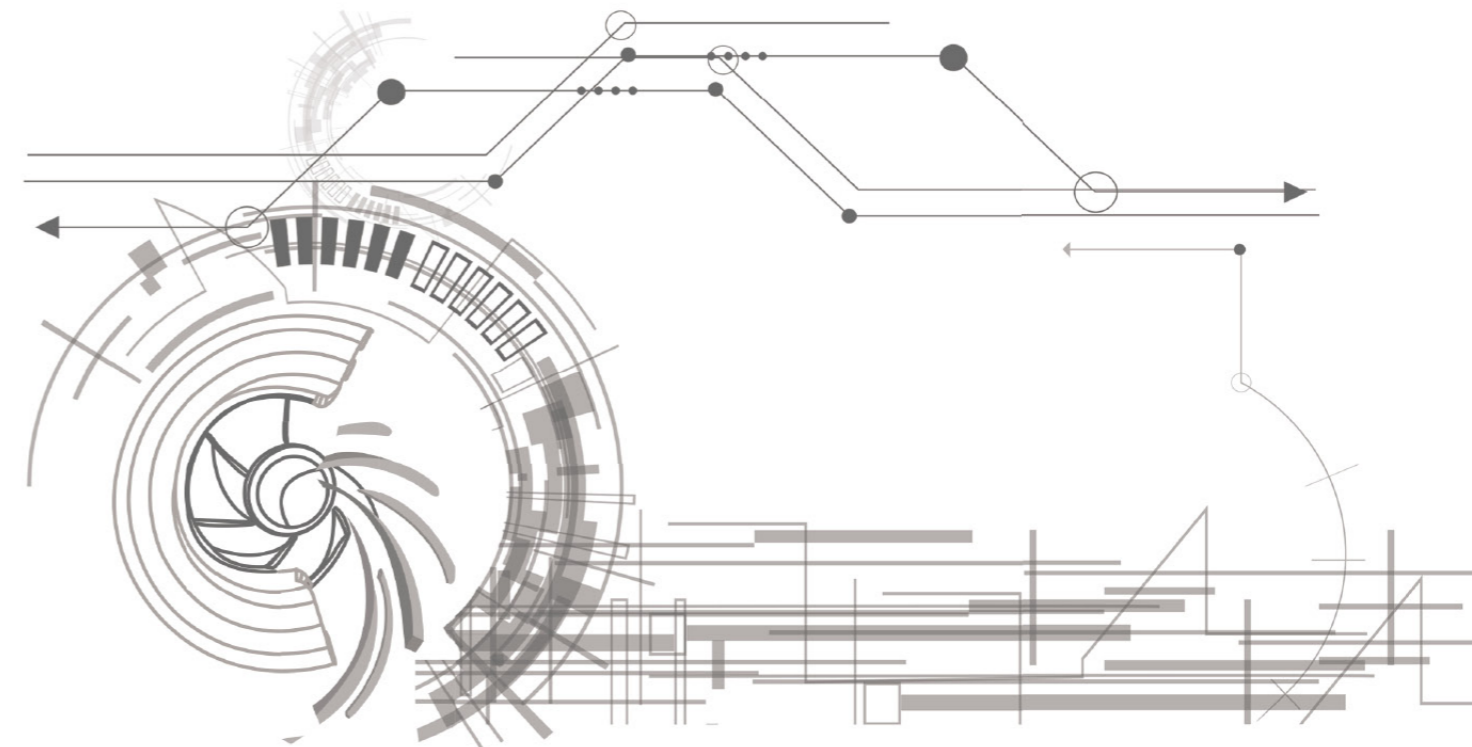
总机(Tel): +86 5555328888

传真(Fax): +86555 5300000

客服热线(Customer service): +865555313333、400-110-3030

邮政(P.C): 238200

网址(Http): [www.sanlianpump.com](http://www.sanlianpump.com)



三联泵业股份有限公司  
SANLIANPUMP INDUSTRY CO.,LTD



## Company Profile 公司简介

三联泵业集团始于1957年，流体输送综合解决方案及集成系统供应商，业务涵盖泵及集成系统、电控设备及智能控制系统、水处理设备设施、流体输送与水处理综合解决方案及工程总包，致力于设备与系统的更节能、更高效、更环保，每年为全世界提供数万台性能可靠的泵产品。现为中国泵行业重点骨干企业，中国通用机械协会理事单位，泵行业协会副理事长单位。

集团注重上下游产业协同发展，立足泵产品的研发与制造主业，同时发挥协同作用，着重发展高端铸造、智慧水务、环保工程及维保服务四大领域，先后成立安徽索立德铸业有限公司、安徽三联工业工程技术有限公司、江苏环发环境科技有限公司、上海三联泵业有限公司等全资子公司。为学习国外先进技术和管理经验，与日本久保田株式会社合资成立久保田泵业（安徽）有限公司；为实现创新驱动高质量发展，成立南京三联流体机械研究院有限公司，专门从事流体、结构、材料等领域基础研究及产品化。

集团总部位于长三角经济区，交通便利，物流通畅。园林式现代化生产园区占地面积500多亩，现有员工700余人，公寓、书吧、餐厅、健身房、娱乐设施等一应俱全。设有营销中心、技术研发中心、综合计划中心和采购中心等专业化职能机构，其中技术研发中心被认定为“安徽省特种泵工程技术研究中心”、“安徽省工业设计中心”、“省认定企业技术中心”、“博士后科研工作站”。技术创新取得累累硕果，现有发明专利47项、海外专利3项，软著4项，实用新型专利132项，所研发产品荣获多个省部级荣誉和奖项。其中，公司承担的“大型高效率耐腐耐磨泵关键技术研究与应用”项目荣获2021年安徽省科学技术进步一等奖。

企业在全国建立了60多个销售和售后服务网点，完善的网络体系为顾客提供方便快捷的服务。客户遍及矿山、钢铁、有色、石油、化工、水利、市政、环保、材料、能源电力、煤炭、消防、海洋等行业，与众多世界500强企业、大型央企、国企建立长期稳定合作关系，产品多次在“南水北调”、“引江济淮”等重点工程和“一带一路”大型项目中应用，以优良的品质和完善的服务获得客户广泛好评。

驭水利世，泵动未来，三联泵业始终努力在流体输送领域为世界发展贡献力量，致力于人与自然、社会的和谐发展。兼顾股东、员工、客户、大众的利益，求真务实，开拓创新，以自身的壮大聚集能量，服务全中国，服务全世界。

## 集研发、制造、销售 服务于一体的集团公司

Set R & D, manufacturing, sales  
service in one of the group



Sanlian Pump Group started in 1957 as a supplier of integrated solutions and integrated systems for fluid transfer, covering pumps and integrated systems, electronic control equipment and intelligent control systems, water treatment equipment and facilities, integrated solutions for fluid transfer and water treatment, and turnkey projects, dedicated to more energy-saving, efficient and environmentally friendly equipment and systems, providing tens of thousands of pumps with reliable performance to the world every year. Now it is a key backbone enterprise in China's pump industry, a director unit of China General Machinery Association, and a vice chairman unit of Pump Industry Association.

The Group focuses on the synergistic development of upstream and downstream industries, based on the main business of pump product research and development and manufacturing, while playing a synergistic role, focusing on the development of high-end casting, intelligent water, environmental protection engineering and maintenance services in four major fields, and has established wholly-owned subsidiaries such as Anhui Solide Casting Co. Ltd. was established as a joint venture with Japan Kubota Co. In order to learn from foreign advanced technology and management experience, and to achieve innovation-driven high-quality development, Nanjing Sanlian Fluid Machinery Research Institute Co., Ltd. was established

The headquarters of the Group is located in the Yangtze River Delta Economic Zone, with convenient transportation and smooth logistics. The garden-style modern production park covers an area of more than 500 mu, with more than 700 employees, apartments, book bars, restaurants, gymnasiums, recreational facilities, etc. There are marketing center, technology research and development center, comprehensive planning center and procurement center and other specialized functional organizations, including the technology research and development center is recognized as "Anhui Province Special Pump Engineering Technology Research Center", "Anhui Province Industrial Design Center", "Provincial Enterprise Technology Center", The Technology R&D Center is recognized as "Anhui Special Pump Engineering Technology Research Center", "Anhui Industrial Design Center", "Provincial Enterprise Technology Center" and "Postdoctoral Research Station". We have 47 invention patents, 3 overseas patents, 4 soft patents and 132 utility model patents, and the products developed have won many provincial and ministerial honors and awards. Among them, the project of "Key Technology Research and Application of Large-Scale High-Efficiency Corrosion and Wear Resistant Pumps" undertaken by the company won the First Prize of Science and Technology Progress of Anhui Province in 2021.

The company has established more than 60 sales and after-sales service outlets nationwide, with a perfect network system to provide customers with convenient and fast services. Our customers are in mining, iron and steel, non-ferrous, petroleum, chemical, water conservancy, municipal, environmental protection, materials, energy and power, coal, fire fighting, marine and other industries, and we have established long-term and stable cooperation with many world top 500 enterprises, large central enterprises and state-owned enterprises. Our products have been applied in key projects such as "South-North Water Transfer", "River Diversion and Huaihuai" and "One Belt and One Road", and have been widely praised by customers for their excellent quality and perfect service.

We are always striving to contribute to the development of the world in the field of fluid transportation and are committed to the harmonious development of man, nature and society. Taking into account the interests of shareholders, employees, customers and the general public, we are pragmatic and pragmatic, pioneering and innovative, gathering energy with our own growth, serving the whole China and the whole world.



## Quality Management 品质管理

每年，在三联8.8万平米的现代化厂房内，三联人将数十万吨的金属材料精心加工成5万余台精品泵产品。

Every year, in Sanlian's 88000 square meter modern factory building, Sanlian people meticulously process hundreds of thousands of tons of metal materials into over 50000 high-quality pump products.



一流的生产加工、检测设备  
First-class production, processing  
and testing equipment



国家火炬计划  
重点高新技术企业

三联泵业股份有限公司为高新技术企业，拥有先进的生产设备700多台；各类检测检验设备160多套，检测检验设备齐全。

Sanlian Pump Industry Co., Ltd. is a high-tech enterprise with over 700 advanced production equipment; More than 160 sets of various testing and inspection equipment are complete.

# 资质荣誉

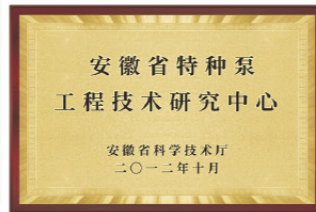
## Qualifications And Honors

对于我们而言,蜚声在外的荣誉  
仅仅意味着一个个全新的开始和必须始终全力以赴!  
三联泵业用品质、用权威、用实力让客户放心  
专注打造行业顶尖水平。

For us, the honor of being widely known  
It only means a new beginning and must always give it all!  
Triple pump industry uses quality, authority, and strength to reassure customers  
Focusing on building the industry's top level.



荣获50多项  
体系认证证书  
和荣誉证书



**60** 年厚积薄发  
60 years of accumulation  
and thin development

铸就中国泵业现代化产业基地  
Build a modern industrial base for  
China's pump industry

泵系列产品  
Pump series products

控制系统  
control system

水处理  
water treatment

# Contents 目录

## 泵及集成系统/Pumps and integrated systems

02

- 02-04 中开泵系列 Zhongkai Pump Series
- 05-06 端吸泵系列 End suction pump series
- 07-14 杂质泵系列 Impurity pump series
- 15-26 化工泵系列 Chemical pump series
- 27-31 多级泵系列 Multistage pump series
- 32-43 水利泵系列 Water pump series
- 44-48 其他泵及供水设备 Other pumps and water supply equipment
- 49-54 消防泵系列 Fire pump series

## 控制系统/control system

56

- 56 动力柜 Power cabinet
- 57 高压配电柜 High voltage distribution cabinet
- 58 低压配电柜 Low voltage distribution cabinet
- 59 泵站控制及监控系统 Pump station control and monitoring system

## 水处理/water treatment

61

- 61-62 业务范围 Business scope
- 63-69 核心技术 core technology
- 70-78 常用工艺设备 Common process equipment

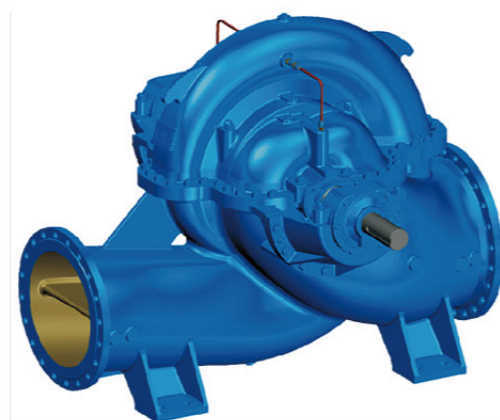


PUMP  
SERIES

**泵** 系列

驭水利世，泵动未来

center-opening snail-casing  
**CENTRIFUGAL PUMP**  
**中开蜗壳式离心泵**



## HS(V)

### 用途及特点 /Applications and Features

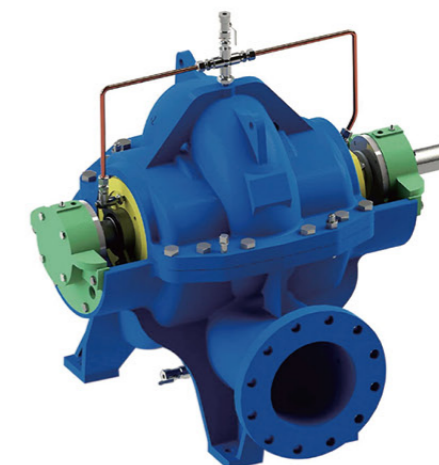
HS(V) 型系列中开泵，是我公司结合九十年代国内外先进制泵技术，设计制造的新一代单级双吸中开蜗壳式离心泵。主要适用于钢铁冶金、水利市政、能源电力、暖通空调、楼宇供水、农业灌溉、船舶工业等领域。

HS(V) type series of medium open pump is a new generation of single-stage double-suction open worm gear centrifugal pump designed and manufactured by our company by combining advanced pump making technology at home and abroad in the 1990s. It is mainly used in steel metallurgy, water conservancy and municipalities, energy and electricity, HVAC, building water supply, agricultural irrigation, ship industry and other fields.

### 运行数据 /Operation data

项目	技术参数
进口直径 /Inlet diameter	DN=125~1600mm
出口直径 /Outlet diameter	DN=80~1400mm
流量 /Flow	$Q \leq 30000\text{m}^3/\text{h}$
扬程 /Lift	$H \leq 230\text{m}$
工作温度 /Operating temperature	$T < 105^\circ\text{C}$
固体颗粒 /Solid particles	$\rho \leq 80\text{mg/L}$

center-opening snail-casing  
**CENTRIFUGAL PUMP**  
**中开蜗壳式离心泵**



## HSN

### 用途及特点 /Applications and Features

HSN 型系列泵，是我公司结合国内外先进制泵技术的基础上，创新设计制造的新一代单级双吸中开蜗壳式离心泵，采用 CFD 流体力学计算方法、计算机辅助三维设计方法开发出的新一代泵类产品，其型谱范围广，水力性能好，结构新颖，具有高效节能、低脉冲、低噪声、维修方便等优点。

泵执行标准为 GB/T5657-2013 《离心泵技术条件（Ⅲ类）》。产品通过精心设计制造和完善的质量控制体系，达到国内先进水平。

HSN series pump is a new generation of single-stage double-suction center-open worm shell centrifugal pump innovatively designed and manufactured by our company on the basis of the most advanced pump-making technology at home and abroad, which is a new generation of pump products developed by CFD fluid mechanics calculation method and computer-aided three-dimensional design method.

The pump implementation standard is GB/T5657-2013 "Centrifugal Pump Technical Conditions (Class III)".

The products have reached the domestic advanced level through careful design and manufacture and perfect quality control system.

### 运行数据 /Operation data

项目	技术参数
进口直径 /Inlet diameter	DN=125~500mm
出口直径 /Outlet diameter	DN=80~400mm
流量 /Flow	$Q \leq 4000\text{m}^3/\text{h}$
扬程 /Lift	$H \leq 230\text{m}$
工作温度 /Operating temperature	$T = -15^\circ\text{C} \sim 105^\circ\text{C}$ (超过 $80^\circ\text{C}$ 时订货时需注明)

*multistage open volute*  
**CENTRIFUGAL PUMP**

**多级中开蜗壳式离心泵**



# MHS

**用途及特点 /Applications and Features**

MHS 系列多级中开蜗壳式离心泵是在结合国内外先进的中开泵研发技术的基础上，采用先进的流体力学计算方法、CFD 技术、计算机辅助设计方法开发出的新一代泵类产品，具有高效节能、低脉冲、低噪声、维修方便等优点。

主要应用于大排量、高扬程泵站，远距离输水工程。

MHS series multi-stage center-opening snail-casing centrifugal pump is a new generation of pumps developed on the basis of advanced research and development technology of center-opening pumps at home and abroad, using advanced fluid mechanics calculation methods, CFD technology and computer-aided design methods, with the advantages of high efficiency and energy saving, low pulse, low noise and easy maintenance.

It is mainly used in large displacement, high head pumping stations and long distance water transmission projects.

**运行数据 /Operation data**

项目	技术参数
进口直径 /Inlet diameter	DN=300~1200m
流量 /Flow	Q ≤ 18000m <sup>3</sup> /h
扬程 /Lift	H ≤ 550m
工作温度 /Operating temperature	T ≤ 80°C
固体颗粒 /Solid particles	ρ ≤ 80mg/L
工作允许压力 /Allowable working pressure	P ≤ 7.0Mpa

*horizontal single-stage end-suction*  
**CENTRIFUGAL PUMP**

**卧式单级端吸离心泵**



# SPE

**用途及特点 /Applications and Features**

SPE 型泵系卧式单级端吸离心泵，供输送清水及物理、化学性质类似于水等不含固体颗粒的液体，广泛使用于工厂、矿山、城市给排水、消防供水及农田排灌。

SPE 型泵结构简单，性能可靠，体积小，重量轻，抗汽蚀性能好，电耗低，使用维修方便。

SPE pump is a horizontal single-stage end-suction centrifugal pump for conveying clear water and liquids with physical and chemical properties similar to water without solid particles, which is widely used in factories, mines, urban water supply and drainage, fire-fighting water supply and agricultural irrigation.

SPE type pump has simple structure, reliable performance, small volume, light weight, good anti-cavitation performance, low electricity consumption, easy to use and maintain.

**运行数据 /Operation data**

项目	技术参数
进口直径 /Inlet diameter	DN ≤ 350mm
出口直径 /Outlet diameter	DN ≤ 300mm
流量 /Flow	Q = 6~1600m <sup>3</sup> /h
扬程 /Lift	H = 5~125m
转速 /Rotational Speed	n=2900r/min, 1450r/min
配用功率 /Matching power	p=0.55~160kW

vertical single stage pipeline  
**CENTRIFUGAL PUMP**  
**立式单级管道离心泵**



# SPI

### 用途及特点 / Applications and Features

SPI 型立式单级管道离心泵，配有标准机械密封和电机。适用于输送清洁、非侵蚀、非易燃易爆、且不含任何对泵机体造成机械或化学侵害的固体颗粒或纤维的液体。

产品设计为顶部可拉出的拆装形式，其可以在不影响管路系统的情况下对泵进行维修。

SPI type vertical single-stage pipeline centrifugal pump with standard mechanical seal and motor. It is suitable for conveying clean, non-aggressive, non-flammable and non-explosive liquids that do not contain any solid particles or fibers that can cause mechanical or chemical attack on the pump body.

The product is designed in a pull-out top disassembly form, which allows the pump to be serviced without affecting the piping system.

### 运行数据 / Operation data

项目	技术参数
进出口直径 / Inlet and outlet diameter	DN=50~350mm
流量 / Flow	Q = 8 ~ 800m <sup>3</sup> /h
扬程 / Lift	H = 5~135m
转速 / Rotational Speed	2900r/min, 1450r/min
工作温度 / Operating temperature	T=-15~+110°C
工作允许压力 / Allowable working pressure	P ≤ 1.6 MPa

**SLURRY PUMP**  
**渣浆泵**



# AHK(R).HHK

### 用途及特点 / Applications and Features

AHK、HHK 型渣浆泵为单级单吸悬臂卧式离心泵，适用于冶金、矿山、煤炭、电力建材等工业部门输送含有悬浮固体颗粒的液体，如精矿、尾矿、灰渣、煤渣、水泥、泥土、砂砾等强硬度、强磨蚀高浓度渣浆，被输送的固液混合物温度一般不超过 80 °C，浆体重量浓度可达 60%。

AHKR 型衬胶泵，输送含有悬浮固体颗粒的浆体介质，具有良好的耐磨性、抗撕性、耐冲性、高弹性及化学稳定性。抽送无棱角的细颗粒，其效果好于金属。

AHK, HHK type slurry pump for single-stage single suction cantilever horizontal centrifugal pump, suitable for metallurgy, mining, coal, electric power building materials and other industrial sectors to transport liquids containing suspended solid particles, such as concentrates, tailings, ash, cinder, cement, clay, gravel and other strong hardness, strong abrasion high concentration slurry, the temperature of the solid-liquid mixture being transported generally does not exceed 80 °C, the slurry weight concentration can reach 60%.

AHKR type rubber-lined pump, conveying slurry medium containing suspended solid particles, has good wear resistance, tear resistance, impact resistance, high elasticity and chemical stability. Pumping fine particles without angles, its effect is better than metal.

### 运行数据 / Operation data

项目	技术参数
进口直径 / Inlet diameter	DN=40~500mm
流量 / Flow	Q = 7.56~5400m <sup>3</sup> /h
扬程 / Lift	H = 6~97m
转速 / Rotational Speed	n=200~3800r/min
配用功率 / Matching power	P=2.2~1200kW



## SLURRY PUMP 渣浆泵



# ZS

### 用途及特点 / Applications and Features

ZS 系列渣浆泵，是三联泵业公司在六十余年泵类产品研发制造经验及综合杂质泵技术特性基础上，全面分析渣浆泵在不同的工业领域运行的情况，采用先进的设计理论，研发的新一代渣浆泵产品。

该系列渣浆泵具有效率高、结构合理、可靠性高、维修方便，广泛应用于煤炭、电力、冶金、化工等行业，输送含有固体颗粒的浆体。固体混合液最大体积浓度  $C_v \leq 30\%$ ，重量浓度  $C_w \leq 60\%$ ，流道宽敞，过流能力强。

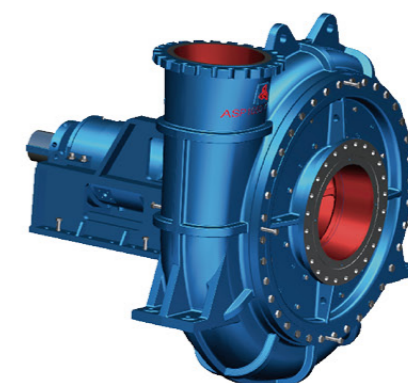
ZS series slurry pump, is the Sanlian pump company in more than 60 years of pump products research and development and manufacturing experience and comprehensive impurity pump technical characteristics based on a comprehensive analysis of slurry pump in different industrial fields operation, using advanced design theory, research and development of a new generation of slurry pump products.

This series of slurry pump has high efficiency, reasonable structure, high reliability, easy maintenance, widely used in coal, electric power, metallurgy, chemical and other industries, conveying slurry containing solid particles. Maximum volume concentration of solid mixture  $C_v \leq 30\%$ , weight concentration  $C_w \leq 60\%$ , wide flow channel, strong flow capacity.

### 运行数据 / Operation data

项目	技术参数
出口直径 /Outlet diameter	DN=40~500mm
流量 /Flow	Q = 0.44~4700m <sup>3</sup> /h
扬程 /Lift	H = 16~120m
转速 /Rotational Speed	n=300~2900r/min
串联许用工作压力 /Allowable working pressure in series	P=2.5Mpa
配用功率 /Matching power	P=2.2~1200kW

## DREDGE PUMP 挖泥泵



# SLN

### 用途及特点 / Applications and Features

SLN 型系列挖泥泵是我公司运用各种先进的计算机辅助设计软件，针对我国江河湖海年久失修，疏浚、吹填工作迫在眉睫的现状而自行研制的一种新型泥泵。该系列泥泵具有整体结构船用性好、挖泥性能优良、寿命长、效率高、轴封可靠、使用综合经济效益显著等特点，可完全满足挖泥船对泥泵的要求。

SLN type series dredging pump is a new type of mud pump developed by our company using various advanced computer-aided design software, for the current situation that our country's rivers, lakes and seas are in disrepair and dredging and blowing work is imminent. This series of mud pump has the characteristics of good overall structure for marine use, excellent dredging performance, long life, high efficiency, reliable shaft seal, and significant comprehensive economic benefits, etc. It can fully meet the requirements of dredger for mud pump.

### 运行数据 / Operation data

项目	技术参数
口径 /Caliber	DN=200 ~1000mm
流量 /Flow	Q = 20 ~ 25000m <sup>3</sup> /h
扬程 /Lift	H = 20 ~ 85m
温度 /Temperature	T = -15 ~ +100°C
压力 /Pressure	P = -2.5Mpa

single casing  
**SLURRY PUMP**  
**单壳体渣浆泵**



# ASP1040

### 用途及特点 / Applications and Features

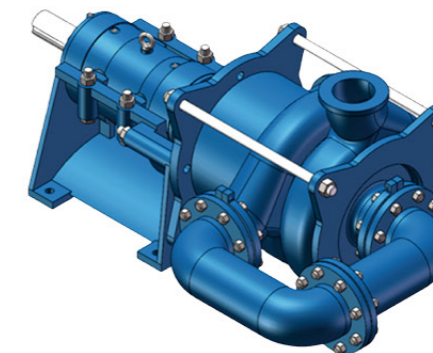
ASP1040 型单壳体渣浆泵，广泛应用于电力、冶金。煤炭、建材、湿法脱硫、化学工业等中轻度耐磨耐腐蚀工况。具有流量大、效率高、耐磨蚀，结构紧凑、运行可靠、振动小等特点。各项技术指标达到国、内外同类产品水平，性能优越，维修方便是其最大的优点。单壳体渣浆泵浆体重量浓度可达：灰浆、煤浆 45%，矿浆达 60%。

ASP1040 type single shell slurry pump, widely used in electric power, metallurgy. Coal, building materials, wet desulfurization, chemical industry and other light wear-resistant corrosion-resistant working conditions. With high flow, high efficiency, wear and corrosion resistance, compact structure, reliable operation, small vibration and other characteristics. Various technical indicators reach the level of similar products at home and abroad, superior performance, easy maintenance is its biggest advantage. Single shell slurry pump slurry body weight concentration can reach: gray slurry, coal slurry 45%, ore slurry up to 60%.

### 运行数据 / Operation data

项目	技术参数
吐出口径 / Spitting caliber	DN=25~1000mm
流量 / Flow	Q = 5 ~ 18500m <sup>3</sup> /h
扬程 / Lift	H = 16~105m
转速 / Rotational Speed	n=300~2900r/min

Self balancing  
**STRUCTURE SLURRY PUMP**  
**自平衡结构渣浆泵**



# ZP

### 用途及特点 / Applications and Features

ZP 系列自平衡结构渣浆泵，是三联泵业公司在六十余年泵类产品开发制造经验及雄厚的杂质泵技术实力基础上，全面分析并依据渣浆泵在不同的工业领域现场运行的情况，采用最先进的设计理论，所研制开发的具有国际先进水平的渣浆泵精品，该系列渣浆泵具有效率高、结构合理、可常性高、维修方便，广泛应用于煤炭、电力、冶金、化工等行业，输送含有固体颗粒的浆体。固体混合液最大体积浓度  $C_v < 30\%$ ，重量浓度  $C_w \leq 60\%$ ，流道宽敞，过流能力强。

1、ZGP 型自平衡结构渣浆泵主要用于尾矿矿浆输送，在尾矿矿浆输送中，单级渣浆泵无法满足浆体输送的扬程要求，当采用渣浆泵串联实现。存在轴封部位泄露问题及启动窜动大等问题。通过设计出自平衡结构渣浆泵，即实现尾矿浆体输送运输又解决轴封部位泄露问题。

2、ZDP 型自平衡结构渣浆泵主要用于广泛应用于煤炭、冶金、石油、食品、化工、制药、脱硫、尾矿、环保等工艺流程，特别适用各种尾矿矿浆的输送及压滤机入口浆体输送。

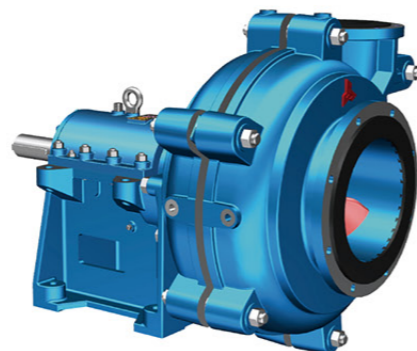
ZP series self-balancing structure slurry pump, is the Sanlian pump company in more than sixty years of pump product development and manufacturing experience and strong impurity pump technology based on a comprehensive analysis and based on slurry pump in different industrial fields of field operation, using the most advanced design theory, the development of the international advanced level of slurry pump boutique, the series of slurry pump has high efficiency, reasonable structure, can often be high, the maintenance of Fang make.

The series of slurry pump has high efficiency, reasonable structure, can often be high, the maintenance side make, widely used in dry coal, electric power, metallurgy, chemical industry, etc., conveying Slurry containing solid particles. The maximum volume concentration of solid mixture  $C_v < 30\%$ , the weight concentration  $C_w \leq 60\%$ , the flow channel is wide and smooth, strong overflow capacity.

1、ZGP type self-balancing structure slurry pump is mainly used for tailing slurry conveying, in tailing slurry conveying, single-stage slurry pump can not meet the slurry conveying head requirements, when using slurry pumps in series to achieve. There are problems such as leakage of shaft seal parts and large start-up flicker. Through the design of self-balancing structure slurry pump, that is, to achieve the tailing slurry transport and solve the shaft seal part leakage problem.

2、ZDP type self-balancing structure slurry pump is mainly used in coal, metallurgy, petroleum, food, chemical, pharmaceutical, desulfurization, tailings, environmental protection and other processes, especially for a variety of tailings slurry conveying and filter press inlet slurry conveying.

horizontal  
**FOAM PUMP**  
**卧式泡沫泵**



# AHF

### 用途及特点 / Applications and Features

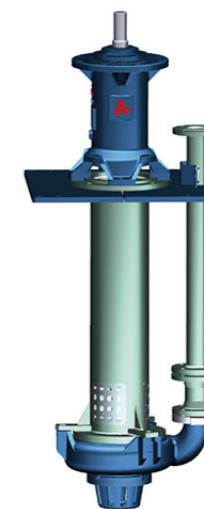
AHF 系列卧式泡沫泵适用于输送含有泡沫的磨蚀性或腐蚀性渣浆，该系列泵在工作时能有效地消除浆体中的泡沫。在来料不足的情况下仍能正常工作，特别适用于各种浮选工艺流程中，是输送泡沫类浆体的理想产品，广泛用于矿山、煤炭、冶金、化工等行业输送含有泡沫固体颗粒的浆体，该系列产品具有结构合理，运行可靠、过流能力强、过流部件使用寿命长等特点

AHF series horizontal foam pump is suitable for conveying abrasive or corrosive slurry containing foam, and this series pump can effectively eliminate the foam in the slurry when it is working. It can still work normally in the case of insufficient incoming material, especially suitable for various flotation processes, and is an ideal product for conveying frothy slurry, widely used in mining, coal, metallurgy, chemical industry and other industries to convey slurry containing frothy solid particles, this series of products have reasonable structure, reliable operation, strong over-flow capacity, long service life of over-flow parts, etc.

### 运行数据 / Operation data

项目	技术参数
口径 / Caliber	DN=50~350mm
流量 / Flow	Q = 40 ~ 4300m <sup>3</sup> /h
扬程 / Lift	H = -65m
温度 / temperature	T = -15 ~ +100°C
压力 / Pressure	P = -1.6Mpa

liquid submerged  
**SLURRY PUMP**  
**液下渣浆泵**



# SP

### 用途及特点 / Applications and Features

SP 型泵为立式离心式渣浆泵，浸入液下。用于输送各种磨蚀性腐蚀性渣浆，也可用于抽送清水。允许通过最大颗粒直径 15mm，液体温度一般不超过 80°C。不需要任何轴封，在吸入量不足的情况下也能正常工作。其过流部件均为耐磨材料。

SP type pump is a vertical centrifugal slurry pump, submerged in liquid. It is used for transporting various abrasive corrosive slurries, and can also be used for pumping clear water. Allowed to pass the maximum particle diameter 15mm, the liquid temperature generally does not exceed 80 °C. It does not need any shaft seal and can work normally even in the case of insufficient suction volume. Its overflow parts are all wear-resistant materials.

### 运行数据 / Operation data

项目	技术参数
进出口直径 / Inlet and outlet diameter	DN=40~200mm
流量 / Flow	Q = 12.6 ~ 821m <sup>3</sup> /h
扬程 / Lift	H = 5~47m
转速 / Rotational Speed	n=400~2200r/min
配用功率 / Matching power	P=-1.1~160kW

submersible  
**SLURRY PUMP**  
**潜水渣浆泵**



# QZJ

### 用途及特点 / Applications and Features

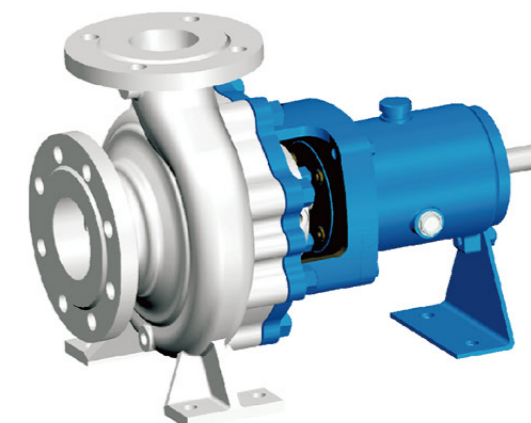
QZJ 型潜水渣浆泵是我司吸收国外先进技术上自行研制的产品，具有结构先进、耐磨耐腐、高效率、长寿命、可靠性好等特点，适用于矿山、冶金、电力、煤炭、环保等行业输送有磨蚀性含固体颗粒的浆体。如冶金选矿厂矿浆输送，火电厂水力除灰、洗煤厂煤浆及重介输送，河道疏浚清淤等场景。在化工产业，也可输送一些含有结晶的腐蚀性浆体。

QZJ type submersible slurry pump is our own products developed on the absorption of foreign advanced technology, with advanced structure, wear and corrosion resistance, high efficiency, long life, good reliability and other characteristics, suitable for mining, metallurgy, electric power, coal, environmental protection and other industries to transport abrasive slurry containing solid particles. Such as metallurgical ore dressing plant slurry conveying, thermal power plant hydraulic ash removal, coal washing plant coal slurry and heavy medium conveying, river dredging and dredging and other scenes. In the chemical industry, it can also convey some corrosive slurry containing crystallization.

### 运行数据 / Operation data

项目	技术参数
口径 /Caliber	DN=40~250mm
流量 /Flow	Q = 15 ~ 2300m <sup>3</sup> /h
扬程 /Lift	H = 75m
温度 /Temperature	T = -15 ~ +40°C
压力 /Pressure	P = -1.6Mpa

**CHEMICAL PUMPS**  
**化工泵**



# ASP5010

### 用途及特点 / Applications and Features

ASP5010 系列化工泵为单级单吸离心泵，根据国际标准 ISO2858/ISO5199 设计，以科学合理、标准化、模块化的设计理念，运行稳定，经济适用、高效节能的产品为客户提供良好的解决方案。

主要用于发电厂、钢铁及金属制造业、化工厂、炼油厂、食品工业、汽车工业、垃圾焚烧厂、海水淡化厂。

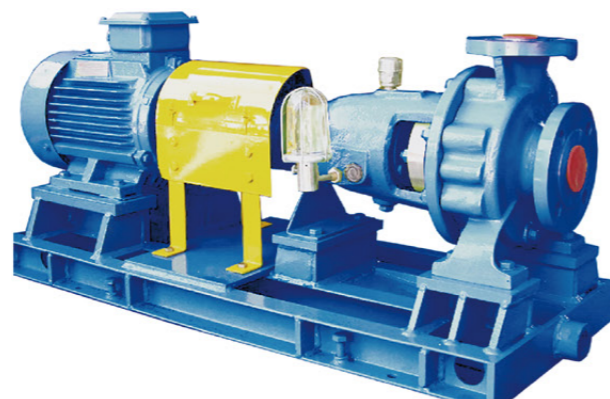
ASP5010 series chemical pumps are single-stage single-suction centrifugal pumps designed according to international standards ISO2858/ISO5199, with scientific and reasonable, standardized and modular design concept, stable operation, economic and applicable, energy efficient products to provide customers with good solutions.

Mainly used in power plants, steel and metal manufacturing, chemical plants, oil refineries, food industry, automotive industry, waste incineration plants, desalination plants.

### 运行数据 / Operation data

项目	技术参数
排出口直径 /Diameter of discharge outlet	DN=25~200mm
流量 /Flow	Q ≤ 12.6 ~ 821m <sup>3</sup> /h
扬程 /Lift	H ≤ 125m
工作压力 /Work stress	P ≤ 2.5Mpa
温度可达 /Temperature can reach	T ≤ 120°C

standard  
**CHEMICAL PUMP**  
**标准化工泵**



# ASP5020

### 用途及特点 / Applications and Features

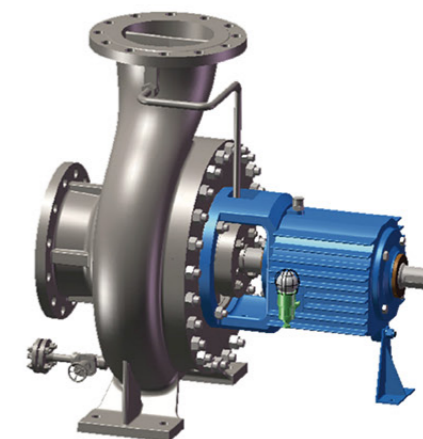
ASP5020 系列标准化工泵是卧式、单级、单吸、涡壳、底脚支撑、悬臂式离心泵。该系列泵是根据 ISO2858 《轴向吸入离心泵标记、性能和尺寸》，GB5656 《离心泵技术条件 (II类)》标准进行设计开发的。该系列产品具有可靠、稳定、高效的水力性能，性能点符合国际标准要求、产品结构简单可靠，通用性强，维修方便简单。密封系统可以根据工况要求配置填料密封、单端面、双端面、串联机械密封。

ASP5020 series standard chemical pumps are horizontal, single-stage, single-suction, volute, foot-supported, cantilever centrifugal pumps. The series pumps are designed and developed according to ISO2858 "Axial suction centrifugal pump markings, performance and dimensions" and GB5656 "Centrifugal pump technical conditions (Class II)" standards. The series of products have reliable, stable and efficient hydraulic performance, and the performance points meet the requirements of international standards, with simple and reliable structure, strong versatility and easy maintenance. The sealing system can be configured with packing seal, single end face, double end face and tandem mechanical seal according to the requirements of working conditions.

### 运行数据 / Operation data

项目	技术参数
口径 /Caliber	DN=32~300mm
流量 /Flow	Q = 2~2000m <sup>3</sup> /h
扬程 /Lift	H ≤ 160m
工作温度 /Operating temperature	T=-80~ + 300℃

chemical  
**PROCESS PUMP**  
**化工流程泵**



# ASP5030/5040

### 用途及特点 / Applications and Features

ASP5030、ASP5040 系列化工流程泵既适用于 50HZ 的电源，也适用于 60HZ 的电源。主要用于炼油厂、石油化学工业、煤化工工业和低温工程、化学工业、造纸、纸浆业、制糖业和普通流程工业、供水厂、海水淡化厂、供暖和空气调节系统、发电厂、环境保护工程、船舶及海洋工程等。

ASP5030, ASP5040 series chemical process pumps are suitable for both 50HZ power supply and 60HZ power supply. They are mainly used in oil refineries, petrochemical industry, coal processing industry and low temperature engineering, chemical industry, paper making, pulp industry, sugar industry and general process industry, water supply plants, desalination plants, heating and air conditioning systems, power plants, environmental protection engineering, ships and marine engineering, etc.

### 运行数据 / Operation data

项目	技术参数
口径 /Caliber	DN=25~400mm
流量 /Flow	Q = 2500m <sup>3</sup> /h
扬程 /Lift	H = 250m
工作温度 /Operating temperature	T=-80~450℃
工作压力 /Work stress	ASP5030 ≤ 2.5MPa
	ASP5040 ≤ 5.0MPa

liquid submerged  
**SLURRY PUMP**  
**立式管道泵**



# ASP5050

### 用途及特点 / Applications and Features

ASP5050 系列 OH3 立式管道泵系立式、径向剖分、单级、单吸、管道式安装、悬臂式结构。按照 API610 第十版《石油、重化学和天然气工业用离心泵》的要求，同时满足 API610 第八版、第九版。密封系统完全按照 API682 第二版《离心泵及回转泵轴封系统》进行设计，可配置各种形式的密封和冲洗冷却方案。适用于炼油厂、石油化工厂、普通工业流程、供水和水处理、海水淡化、煤化工和低温工程、管线加压。

ASP5050 series OH3 vertical pipeline pumps are vertical, radially split, single-stage, single-suction, pipe-mounted, cantilevered structure. It meets the requirements of API610 10th edition "Centrifugal Pumps for Petroleum, Heavy Chemical and Natural Gas Industries" and API610 8th and 9th editions. The sealing system is designed in full accordance with API682 2nd edition "Centrifugal Pump and Rotary Pump Shaft Seal System", and can be configured with various forms of seals and flushing and cooling solutions.

It is suitable for oil refineries, petrochemical plants, general industrial processes, water supply and water treatment, seawater desalination, coal chemical and cryogenic engineering, and pipeline pressurization.

### 运行数据 / Operation data

项目	技术参数
规格 / Specification	DN=40~200mm
流量 / Flow	Q = 3~600m <sup>3</sup> /h
扬程 / Lift	H = 120m
工作压力 / Work stress	P=2.5Mpa
工作温度 / Operating temperature	T=-20~250℃

hot water  
**CIRCULATION PUMP**  
**热水循环泵**



# ASP5200

### 用途及特点 / Applications and Features

ASP5200 系列高温高压热水循环泵，依据 API610 设计规范，采用标准化模块化的设计理念，为客户提供经济而可靠的解决方案。设计科学合理、运行稳定高效。适用介质 海水、热水、热油、化学液体等。广泛运用于发电厂、钢铁及金属制造业（锅炉循环泵）、化工厂、炼油厂、食品工业、汽车工业、垃圾焚烧厂、海水淡化厂。

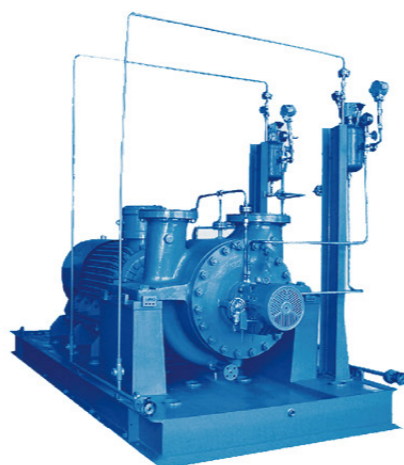
ASP5200 series high-temperature and high-pressure hot water circulation pump is designed according to API610 design specification and adopts standardized and modular design concept to provide customers with economical and reliable solutions. The design is scientific and reasonable, and the operation is stable and efficient. Applicable media Seawater, hot water, hot oil, chemical liquids, etc. Widely used in power plants, steel and metal manufacturing industries (boiler circulation pumps), chemical plants, oil refineries, food industry, automotive industry, waste incineration plants, seawater desalination plants.

### 运行数据 / Operation data

项目	技术参数
排出口直径 / Diameter of discharge outlet	DN=40~200mm
流量 / Flow	Q ≤ 2000m <sup>3</sup> /h
扬程 / Lift	H ≤ 200m
工作压力 / Work stress	P=10Mpa

heavy-duty petrochemical  
**PROCESS PUMP**

## 重载型石油化工流程泵



# ASP5320

### 用途及特点 / Applications and Features

ASP5320 系列重载型石油化工流程泵系卧式、径向剖分、单级、两级或三级、中心安装、双支撑布置结构。按照 API610 第十版《石油、重化学和天然气工业用离心泵》标准进行设计，同时满足第八版、第九版设计要求。广泛的应用在石油精制、石油化工、煤化工、原油输送、天然气加工、海上钻井设备和其他工业流程中，可输送各种清洁或带有颗粒的中性或具有强腐蚀性的介质。

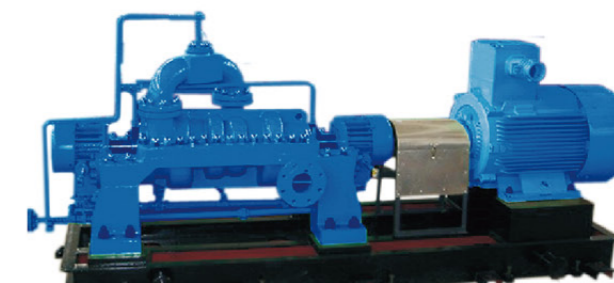
ASP5320 series heavy-duty petrochemical process pumps are horizontal, radially split, single-stage, two-stage or three-stage, center-mounted, double-supported structure. It is designed in accordance with API610 10th edition "Centrifugal Pumps for Petroleum, Heavy Chemical and Natural Gas Industries" standard, and meets the design requirements of 8th and 9th editions. Widely used in petroleum refining, petrochemical, coal chemical, crude oil transportation, natural gas processing, offshore drilling equipment and other industrial processes, they can transport a variety of clean or neutral or strongly corrosive media with particles.

### 运行数据 / Operation data

项目	技术参数
流量 /Flow	Q = 5 ~ 3500m <sup>3</sup> /h
扬程 /Lift	H ≤ 650m
适用温度 /Applicable temperature	T=-80~450℃
配用功率 /Matching power	P=-1.1~160kW

heavy-duty petrochemical  
**PROCESS PUMPS**

## 重载型石油化工流程泵



# ASP5330

### 用途及特点 / Applications and Features

ASP5330、ASP5331 系列 BB3 型重载型石油化工流程泵系轴向剖分、多级、双蜗壳，近中心安装、双支撑布置结构。按照 API610 第十版《石油、重化学和天然气工业用离心泵》标准设计。ASP5331 专门针对高温、高压等极限工况设计的双壳体轴向剖分、卧式多级离心泵。

主要用于石油开采、石油化工、化工、煤化工、管线输送、海水淡化、电厂等，也可用于煤化工中的灰水泵、贫甲醇输送泵，化工行业的高压液力能量回收透平，化肥、合成氨装置的贫液泵和富液泵等。

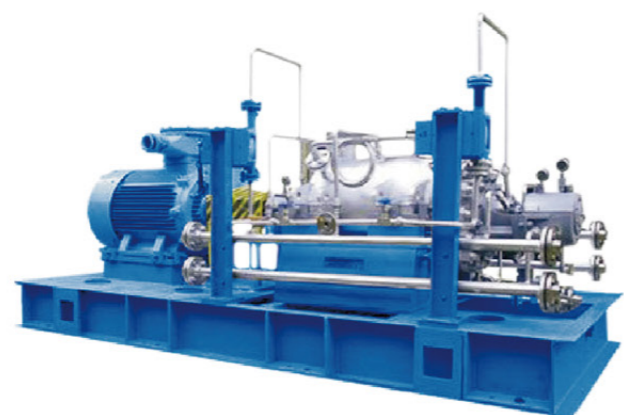
ASP5330, ASP5331 series BB3 heavy-duty petrochemical process pumps are axially split, multi-stage, double worm casing, near-center installation, double support arrangement structure. ASP5331 is a double casing axially split, horizontal multistage centrifugal pump designed for high temperature, high pressure and other extreme working conditions.

It is mainly used in petroleum extraction, petrochemical industry, chemical industry, coal chemical industry, pipeline transportation, seawater desalination, power plant, etc. It can also be used in coal chemical industry for ash water pump, poor methanol transfer pump, high pressure hydraulic energy recovery turbine in chemical industry, poor liquid pump and rich liquid pump in fertilizer and synthetic ammonia unit, etc.

### 运行数据 / Operation data

项目	技术参数
流量 /Flow	Q = 10 ~ 1500m <sup>3</sup> /h
扬程 /Lift	H ≤ 3000m
适用温度 /Applicable temperature	T=-40~200℃
设计压力 /Design pressure	P=10Mpa~35Mpa

horizontal cylinder  
**BAG PUMP**  
**卧式筒袋泵**



# ASP5350

### 用途及特点 / Applications and Features

ASP5350 系列重载型石油化工流程泵系卧式筒袋泵，双壳体、节段式、叶轮同向布置的卧式多级离心泵，水平中心线支承。按照 API610 第十版《石油、重化学和天然气工业用离心泵》标准设计的。根据用户要求，首级叶轮可设计成单吸或双吸两种结构。

ASP5350 series heavy-duty petrochemical process pump is a horizontal cylinder bag pump, double casing, segmental, impeller is arranged in the same direction of the horizontal multistage centrifugal pump, horizontal centerline support. It is designed according to the standard of API610 10th edition "Centrifugal Pumps for Petroleum, Heavy Chemical and Natural Gas Industries". The first stage impeller can be designed as single suction or double suction structure according to customer requirements.

### 运行数据 / Operation data

项目	技术参数
口径 / Inlet and outlet diameter	DN=40~200mm
流量 / Flow	Q = 5 ~ 730m <sup>3</sup> /h
扬程 / Lift	H ≤ 3200m
适用温度 / Applicable temperature	T=-40~200°C
转速 / Rotational Speed	n ≤ 4000r/min

long shaft  
**SUBMERGED PUMP**  
**长轴液下泵**



# ASP5540

### 用途及特点 / Applications and Features

ASP5540 系列长轴液下泵系单级，单吸，蜗壳式立式长轴液下泵。完全符合 GB/T5656-2008《离心泵技术条件 II 类》标准要求，部分符合 API610 第十版《石油、重化学和天然气工业用离心泵》标准要求。该系列泵具有很高的安全可靠，泵运转稳定，使用寿命长，并且维修方便简单，零件通用性强，备品备件种类少，具有很高的使用性能。

ASP5540 series long-shaft submerged pump is a single-stage, single-suction, worm-gear type vertical long-shaft submerged pump. It fully meets the requirements of GB/T5656-2008 "Centrifugal Pump Technical Conditions Class II" standard, and partly meets the requirements of API610 10th edition "Centrifugal Pumps for Oil, Heavy Chemical and Natural Gas Industries" standard. The series pumps have high safety and reliability, stable pump operation, long service life, easy and simple maintenance, strong generality of parts, few types of spare parts, and high performance in use.

该系列泵主要用于炼油厂、石油化工、煤化工、发电厂、环境保护工程、污水处理，水泥厂等行业和领域。

This series of pumps are mainly used in oil refineries, petrochemical industry, coal chemical industry, power plants, environmental protection projects, sewage treatment, cement plants and other industries and fields.

### 运行数据 / Operation data

项目	技术参数
出口口径 / Outlet caliber	DN=25~200mm
流量 / Flow	Q = 2 ~ 400m <sup>3</sup> /h
扬程 / Lift	H = 5~100m
工作压力 / Work stress	P ≤ 1.6Mpa



vertical cylinder  
**BAG PUMP**  
**立式筒袋泵**



## ASP5560

### 用途及特点 / Applications and Features

ASP5560 系列为多级、径向剖分立式筒袋泵。按照 API610 第十版《石油、重化学和天然气工业用离心泵》标准要求设计制造，同时满足第八版、第九版设计要求。该系列泵滚动轴承采用稀油润滑，液下滑动轴承采用多点支撑结构，同时在支撑、冷却、安装维修等结构方面进行了周密的考虑和设计，并可以配置各种辅助和监控系统，使该系列产品具有很高的安全性和可靠性。

适用于输送清洁的或稍有污染的低温的或高温的、化学中性或有腐蚀性的液体。

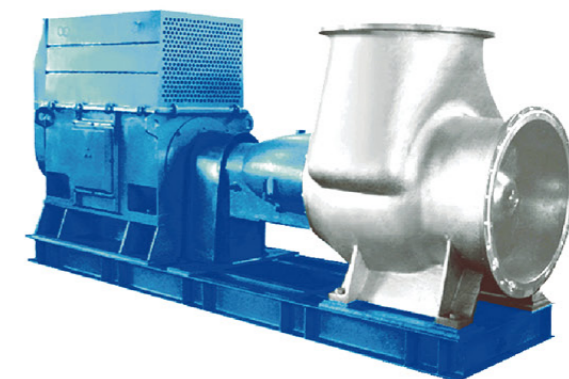
ASP5560 series is a multi-stage, radially dissected vertical cylinder bag pump. It is designed and manufactured in accordance with the requirements of API610 10th edition "Centrifugal Pumps for Oil, Heavy Chemical and Natural Gas Industries" standard, and also meets the design requirements of 8th and 9th editions. The rolling bearings of this series of pumps are lubricated with thin oil, and the under-liquid sliding bearings adopt multi-point support structure, and the structure of support, cooling, installation and maintenance are well considered and designed, and various auxiliary and monitoring systems can be configured, so that this series of products have high safety and reliability.

It is suitable for conveying clean or slightly polluted low or high temperature, chemically neutral or corrosive liquids.

### 运行数据 / Operation data

项目	技术参数
规格 / Specification	DN=40~200mm
流量 / Flow	Q = 2 ~ 15000m <sup>3</sup> /h
扬程 / Lift	H ≤ 1000m
工作压力 / Work stress	P ≤ 10.0Mpa

chemical axial  
**FLOW PUMP**  
**化工轴流泵**



## ASP5610

### 用途及特点 / Applications and Features

ASP5610 系列化工轴流泵为卧式、径向剖分、悬臂式轴流泵。泵体采用底脚支撑，按照 GB13008-2010《混流泵、轴流泵技术条件》进行设计制造。该系列泵具有结构安全可靠、运行稳定、维修方便的特点。该系列泵水力性能稳定、效率高、使用范围广，是高效节能产品。主要应用于输送常温或中温、中性或有腐蚀性、清洁或含有颗粒的介质。特别适用于制盐制碱的强循环系统。

ASP5610 series chemical axial flow pump is a horizontal, radially dissected, cantilevered axial flow pump. The pump body is supported by the foot and designed and manufactured in accordance with GB13008-2010 Technical Conditions for Mixed Flow Pumps and Axial Flow Pumps. This series of pump has the characteristics of safe and reliable structure, stable operation and convenient maintenance. This series of pump has stable hydraulic performance, high efficiency, wide range of use, and is a high-efficiency and energy-saving product. It is mainly used for conveying medium of normal or medium temperature, neutral or corrosive, clean or containing particles. It is especially suitable for the strong circulation system of salt and alkali making.

### 运行数据 / Operation data

项目	技术参数
流量 / Flow	Q ≤ 11000m <sup>3</sup> /h
扬程 / Lift	H ≤ 11m
工作压力 / Work stress	P ≤ 0.6Mpa
工作温度 / Operating temperature	T=-20~180°C
工作转速 / Working speed	n ≤ 1450r/min

chemical mixed  
**FLOW PUMP**  
**化工混流泵**



# ASP5620

### 用途及特点 / Applications and Features

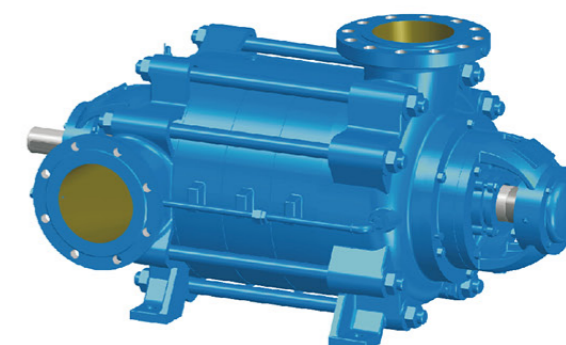
ASP5620 系列单级、离心式化工混流泵为卧式径向剖分，悬臂式混流泵。泵体采用底脚支撑。按照 GB13008-2010《混流泵、轴流泵技术条件》进行设计制造。该系列泵具有结构安全可靠，运行稳定，维修方便的特点。该系列泵水力性能稳定、效率高。本系列泵能够经济有效地输送大流量、低扬程的、均匀的或含有一定颗粒的化学中性的或有腐蚀性的液体。

ASP5620 series single-stage, centrifugal chemical mixed-flow pump is a horizontal radially split, cantilever type mixed-flow pump. The pump body is supported by the foot. It is designed and manufactured in accordance with GB13008-2010 Technical Conditions for Mixed Flow Pumps and Axial Flow Pumps. This series of pump has the characteristics of safe and reliable structure, stable operation and convenient maintenance. This series pump has stable hydraulic performance and high efficiency. This series of pumps can economically and effectively convey large flow, low head, uniform or chemically neutral or corrosive liquids containing certain particles.

### 运行数据 / Operation data

项目	技术参数
出口口径 /Outlet caliber	DN ≤ 65cm
流量 /Flow	Q ≤ 7000m <sup>3</sup> /h
扬程 /Lift	H ≤ 25m
工作压力 /Work stress	P ≤ 1.0Mpa

mining wear-resistant  
**MULTI-STAGE PUMP**  
**矿用耐磨多级泵**



# D、MD

### 用途及特点 / Applications and Features

MD 型泵是在 D 型泵基础上，改进设计的一种矿用耐磨多级离心泵。MD 型泵耐磨可靠，寿命长，特别适用于矿山排水，抽送固体颗粒含量不大于 1.5%（颗粒直径小于 0.5mm）的矿井水及其它类似液体。MD 型泵抽送介质温度不大于 80℃。

MD type pump is a kind of coal mine wear-resistant multi-stage centrifugal pump based on D type pump. MD type pump is wear-resistant and reliable, long life, especially suitable for mine drainage, pumping mine water and other similar liquids with solid particle content not more than 1.5% (particle diameter less than 0.5mm). MD type pump pumping medium temperature not more than 80℃.

### 运行数据 / Operation data

项目	技术参数
进口直径 /Inlet diameter	DN=40~350mm
流量 /Flow	Q = 6.3 ~ 1250m <sup>3</sup> /h
扬程 /Lift	H = 50~1000m
转速 /Rotational Speed	n=1480~2980r/min
配用功率 /Matching power	P=5.5~3150kW

Self balancing multi-  
**STAGE CENTRIFUGAL PUMP**  
**自平衡多级离心泵**



# MDP

### 用途及特点 / Applications and Features

MDP 系列卧式多级离心泵（自平衡型），是为加速多级离心泵技术发展，并满足用户需求，在吸收消化国外先进技术的基础上，结合本公司多年研发经验设计的创新产品，产品性能达到业内同类产品的先进水平，是普通多级离心泵最好的替代品。

该型泵典型特点表现于在结构上彻底取消传统的用于平衡轴向力的平衡盘系统，依靠叶轮对称布置自动平衡轴向力，这一创新使得多级泵运行具有节能高效、平稳可靠、易损件少、运行成本大大降低等优势。

MDP series horizontal multistage centrifugal pump (self-balancing type) is an innovative product designed to accelerate the development of multistage centrifugal pump technology and meet the needs of users, based on the absorption and digestion of advanced foreign technology, combined with the company's many years of experience in research and development, the product performance has reached the advanced level of similar products in the industry, is the best alternative to ordinary multistage centrifugal pump.

The typical features of this type of pump are that the traditional balancing disc system for balancing axial force is completely cancelled in the structure, and the axial force is automatically balanced by the symmetrical arrangement of the impeller, which makes the multi-stage pump operate with the advantages of energy saving and high efficiency, smooth and reliable, less wearing parts and much lower operating cost.

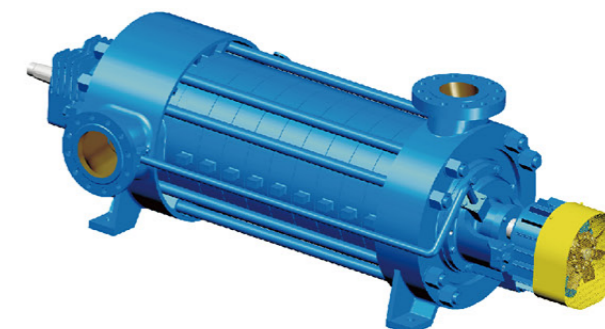
### 运行数据 / Operation data

项目	技术参数
泵吸入、排出口径 Pump suction and discharge caliber	DN:40 ~ 350mm
流量 /Flow	Q:3.75 ~ 1360m <sup>3</sup> /h
扬程 /Head	H:92 ~ 1384m
电机功率 /Motor power	N: 7.5 ~ 4000KW

(注：本册中所列性能参数值为常温清水状态值)

(Note: The performance parameter values listed in this book are the normal temperature clean water state values)

mining wear-resistant  
**MULTISTAGE PUMP**  
**矿用耐磨多级泵**



# MDS

### 用途及特点 / Applications and Features

MDS 型泵是在 D 型泵基础上改进设计的一种煤矿耐磨用多级离心泵。

MDS 型泵耐磨可靠、寿命长，抗气蚀性能好，特别适用于矿山排水，抽送固体颗粒含量不大于 1.5%（颗粒直径小于 0.5mm）的矿井水及其它类似液体。

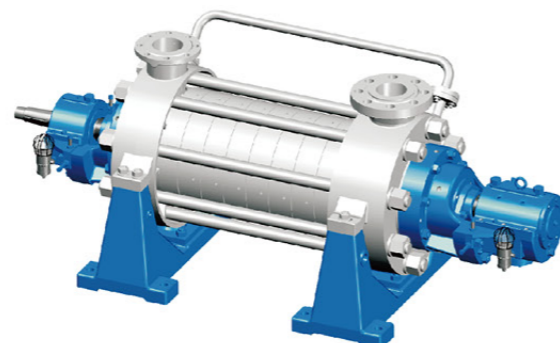
MDS type pump is a kind of multi-stage centrifugal pump for coal mine with wear-resisting based on D type pump.

MDS type pump is wear-resistant, reliable, long life, good anti-cavitation performance, especially suitable for mine drainage, pumping mine water and other similar liquids with solid particle content not more than 1.5% (particle diameter less than 0.5mm).

### 运行数据 / Operation data

项目	技术参数
进口直径 /Inlet diameter	DN=80~200mm
流量 /Flow	Q = 100~420m <sup>3</sup> /h
扬程 /Lift	H = 99~1120m
转速 /Rotational Speed	n=1480r/min
配用功率 /Matching power	P=280~3150kW

secondary high-pressure  
**MULTI-STAGE PUMP**  
**次高压多级泵**



# DG

### 用途及特点 /Applications and Features

DG 型泵为卧式多级离心泵，用于输送温度低于 160°C 的清水。主要用于轻纺工业能量综合利用和小型热电厂次高压锅炉给水，也可用于输送含不溶固体杂质 0.25%、溶于水的固体杂质 5% 的物理和化学性质类似与水的其他介质。

DG type pump is horizontal multi-stage centrifugal pump, used for conveying clear water with temperature lower than 160 °C . It is mainly used for the comprehensive utilization of energy in light textile industry and the feed water of sub-high pressure boiler in small thermal power plant, and can also be used to convey other media with physical and chemical properties similar to water containing 0.25% of insoluble solid impurities and 5% of solid impurities dissolved in water.

### 运行数据 /Operation data

项目	技术参数
进口直径 /Inlet diameter	DN=40~150 mm
流量 /Flow	Q = 6.3~250m <sup>3</sup> /h
扬程 /Lift	H = 50~1500m
转速 /Rotational Speed	n=2980r/min
配用功率 /Matching power	P=3~1000kW

vertical multistage  
**CENTRIFUGAL PUMP**  
**立式多级离心泵**



# CDL(F)

### 用途及特点 /Applications and Features

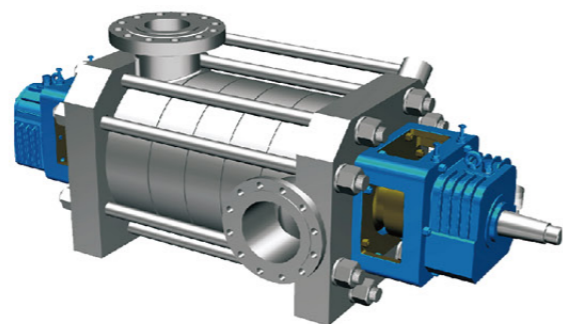
CDL (F) 型泵为非自吸立式多级离心泵，主要用于高层建筑、消防、城镇供水、水处理、工业及灌溉等系统，输送低粘度、非爆炸性、不含固体颗粒或纤维的液体，CDL 适用于无腐蚀性液体，CDLF 适用于轻度腐蚀性液体。该泵具有高效率、低噪声、耐轻度腐蚀及结构紧凑、外型美观、体积小、重量轻、使用维护方便、密封性能可靠等特点。

CDL (F) type pump is non-self-priming vertical multi-stage centrifugal pump, mainly used in high-rise buildings, fire-fighting, urban water supply, water treatment, industry and irrigation systems, conveying low viscosity, non-explosive, non-solid particles or fiber liquid, CDL is suitable for non-corrosive liquid, CDLF is suitable for mildly corrosive liquid. The pump has the characteristics of high efficiency, low noise, light corrosion resistance and compact structure, beautiful appearance, small volume, light weight, easy to use and maintain, reliable sealing performance, etc.

### 运行数据 /Operation data

项目	技术参数
进出口直径 /Inlet and outlet diameter	DN=25 ~ 150mm
流量 /Flow	Q = 0.4 ~ 240m <sup>3</sup> /h
扬程 /Lift	H ≤ 300m
转速 /Rotational Speed	n=2900r/min、2950r/min
配用功率 /Matching power	P=0.37 ~ 110kW
工作温度 /Operating temperature	T= 常温型 -15~80°C /T=Ambient type-15~80°C
	热水型 -15~120°C /Hot Water-15~120°C

seawater  
**DESALINATION PUMP**  
**海水淡化泵**



# HD

### 用途及特点 / Applications and Features

三联 HD 系列海水淡化泵是新一代多级、节段式、导叶型、反渗透海水淡化高压泵的代表性产品。HD 高压是为了满足反渗透法淡化系统高效、可靠的运行要求而设计的。

在 HD 型泵的研发过程中，应用了有限元分析技术，其设计考虑了操作人员的偏好，保证了产品的简便性和可靠性。由于它使用了先进的水力组件和高效叶轮，能耗和成本都得到很好的控制。设计人员优化了组件设计，延长了运行寿命，上述特点使得 HD 型泵成为一款可靠性高、低成本的进料泵，适合作为反渗透系统的核心泵。

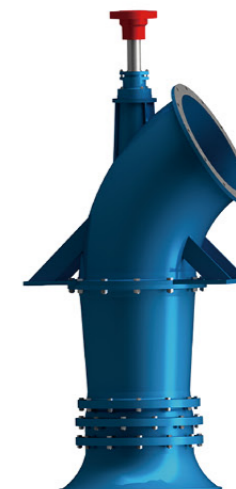
Triple HD series desalination pumps are the representative products of the new generation of multi-stage, segway, guide vane and reverse osmosis desalination high-pressure pumps. HD high pressure is designed to meet the high efficiency and reliable operation requirements of reverse osmosis desalination system.

In the development process of the HD pump, finite element analysis technology is applied, and the design takes into account the preferences of the operator to ensure the simplicity and reliability of the product. Because it uses advanced hydraulic components and high efficiency impeller, energy consumption and cost are well controlled. The designers optimized the component design and extended the operating life, which made the HD pump a reliable, low-cost feed pump suitable for use as the core pump for reverse osmosis systems.

### 运行数据 / Operation data

项目	技术参数
额定流量 /Flow	Q = 110~2080m <sup>3</sup> /h
额定扬程 /Lift	H = ≤ 900m

double base shaft  
**MIXED FLOW PUMP**  
**双基础轴 / 混流泵**



# ZLB/HD

### 用途及特点 / Applications and Features

ZLB/HD 型双基础立式轴混流泵是我公司自主研发、全新系列开发的新一代轴混流泵产品，具有流量大，结构形式多样，效率高，气蚀性能好、安装维护简便等特点，本系列产品供输送介质温度不超过 50℃ 的清水或物理化学性质近似水的其它其他液体，广泛应用于大型水利工程、农田灌溉、工业输送水、热电站输送循环水、船坞升降水位、城市给排水及调水工程。

ZLB/HD double foundation vertical shaft mixed flow pump is a new generation of shaft mixed flow pump developed by our company, with large flow rate, various structure forms, high efficiency, good cavitation performance, easy installation and maintenance, etc. This series of products are used for conveying clear water or other liquids with physical and chemical properties similar to water, whose medium temperature does not exceed 50 ° C. They are widely used in large water conservancy projects, agricultural irrigation, industrial water conveying, circulating water conveying in thermal power stations, water level lifting in shipyards, urban water supply and drainage and water transfer projects.

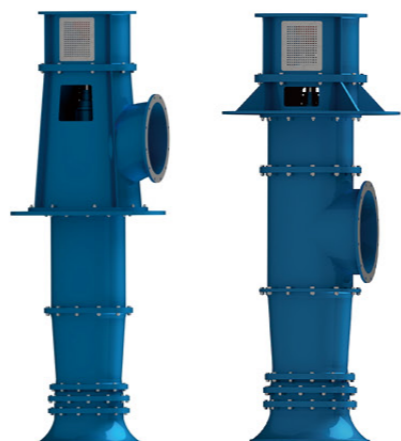
### 运行数据 / Operation data

项目	技术参数
出口直径 /outlet diameter	DN=350 ~3000mm
流量 /Flow	Q = 0.25 ~ 41m <sup>3</sup> /s
扬程 /Lift	H = 1.1~29m
转速 /Rotational Speed	n=125~1450rpm
电机功率 /Motor power	P=11~3000kW

single foundation shaft

### MIXED FLOW PUMP

### 单基础轴 / 混流泵



## LSZ(H)

#### 用途及特点 / Applications and Features

LSZ(H) 型单基础轴 / 混流泵，具有流量大、效率高，汽蚀性能好等特点。可输送温度不超过 50℃ 的清水或物理化学性质近似水的其它液体。泵的泵体与电机直连，安装在一个基础上，具有安装检修方便、节省工程造价等显著优点，可广泛应用于农田水利设施、城市给排水、跨流域调水、热电站输送循环水、船坞升降水位、水产养殖及其他水利工程。

LSZ(H) type single foundation shaft/mixed flow pump is characterized by high flow, high efficiency and good cavitation performance. It can convey clear water with temperature not exceeding 50 °C or other liquids with physical and chemical properties similar to water. The pump body is directly connected with the motor and installed on a foundation, which has the significant advantages of easy installation and maintenance, saving project cost, etc. It can be widely used in agricultural water conservancy facilities, urban water supply and drainage, inter-basin water transfer, circulating water transfer in thermal power stations, dock elevation, aquaculture and other water conservancy projects.

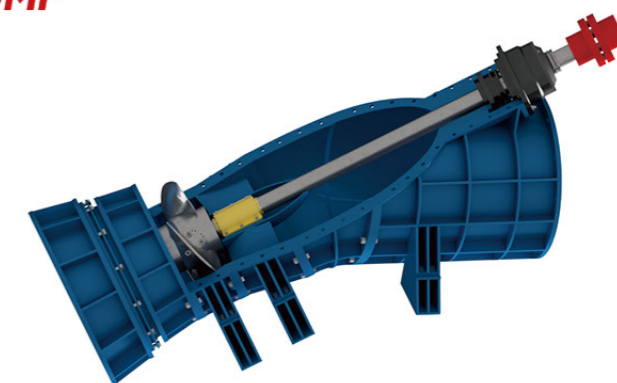
#### 运行数据 / Operation data

项目	技术参数
出口直径 /outlet diameter	DN=350 ~2000mm
流量 /Flow	Q = 0.25 ~ 15.5m <sup>3</sup> /s
扬程 /Lift	H = 1.1~29m
转速 /Rotational Speed	n=150~1450rpm
电机功率 /Motor power	P=11~2000kW

Oblique

### HORIZONTAL AXIAL FLOW PUMP

### 斜式 / 卧式轴流泵



## ZXB/ZWB

#### 用途及特点 / Applications and Features

ZXB/ZWB 型斜式轴流泵 / 卧式轴流泵区别于立式轴流泵，用于低扬程泵站，具有结构简单、工程投资省、便于管理维护等优点，广泛应用于大型水利工程。

ZXB / ZWB inclined axial flow pump / horizontal axial flow pump is different from vertical axial flow pump, used in low head pump station, has the advantages of simple structure, less engineering investment, easy management and maintenance, widely used in large water conservancy projects.

#### 运行数据 / Operation data

项目	技术参数
出口直径 /outlet diameter	DN=1600~3000mm
流量 /Flow	Q=6.8~40.5m <sup>3</sup> /s
扬程 /Lift	H=1.5~5.0m
转速 /Rotational Speed	n=123~248rpm
电机功率 /Motor power	P=630~2000kW

Vertical shaft  
**TUBULAR PUMP**  
**竖井贯流泵**



# ZGB

### 用途及特点 / Applications and Features

ZGB 竖井贯流泵装置作为一种新的低扬程水泵装置形式，具有结构简单、工程投资省、便于管理维护等优点，集防洪、排涝、通航等功能于一体，目前正在推广使用。

叶片采用的是当今最先进的五轴数控加工法加工，该工艺不但提高了叶片的几何精度，而且提高了叶轮的动静平衡精度，充分保证了水泵的水力性能以及运行的平稳性。

As a new form of low-lift pump device, ZGB shaft tubular current pump device has the advantages of simple structure, simple engineering investment, easy management and maintenance, and integrates flood control, drainage, navigation and other functions, and is currently being promoted and used.

The blade is the most advanced five-axis CNC machining method, which not only improves the geometric accuracy of the blade, but also improves the dynamic balance accuracy of the impeller, fully ensuring the hydraulic performance of the pump and the stability of operation.

### 运行数据 / Operation data

项目	技术参数
出口直径 /outlet diameter	DN=1600~3000mm
流量 /Flow	Q=4.3~35.7m <sup>3</sup> /s
扬程 /Lift	H=1.5~2m
转速 /Rotational Speed	n=112~187rpm
电机功率 /Motor power	P=200~1230kW

Single foundation core  
**PULLING MIXED FLOW PUMP**  
**单基础抽芯式混流泵**



# LSHC

### 用途及特点 / Applications and Features

LSHC 型泵为单基础立轴抽芯式混流泵，适合于中低扬程，流量大的应用场合。该泵具有较宽的高效区，汽蚀性能好的特点，特别适用于水位变化较大及扬程较高的场合使用。

LSHC type pump is single foundation vertical shaft core pumping type mixed flow pump, suitable for low to medium head and high flow applications. The pump has a wide high-efficiency zone and good cavitation performance, especially suitable for use in applications where the water level varies widely and the head is high.

### 运行数据 / Operation data

项目	技术参数
出口直径 /outlet diameter	DN=500~2400mm
流量 /Flow	Q=0.25~23.6m <sup>3</sup> /s
扬程 /Lift	H=8~33.5m
转速 /Rotational Speed	n=150~1450rpm
电机功率 /Motor power	P=11~4000kW

horizontal mix-  
**FLOW PUMP**  
**卧式混流泵**



# HW

### 用途及特点 / Applications and Features

HW 型混流泵有良好的技术经济指标,具有效率高、使用范围广、汽蚀性能好、使用管理方便和价格低廉等特点,是一种十分重要而又很受欢迎的的排水机械。

主要用于农田排灌、电厂供水、城市给水、造船工业及船舶推进等。适用于输送清水或物理、化学性质类似于水的其它液体,被输送的液体温度不宜超过 50℃。

HW type mixed flow pump has good technical and economic indexes, with high efficiency, wide range of use, good cavitation performance, easy to use and manage and low price, etc.

It is a very important and popular drainage machinery.

It is mainly used for agricultural drainage and irrigation, power plant water supply, urban water supply, shipbuilding industry and ship propulsion, etc. It is suitable for conveying clear water or other liquids with physical and chemical properties similar to water, and the temperature of the conveyed liquid should not exceed 50℃.

### 运行数据 / Operation data

项目	技术参数
口径 /Caliber	DN=100~800mm
流量 /Flow	Q = 50~7200m <sup>3</sup> /h
扬程 /Lift	H = 3~20m
效率 /Efficiency	η=74~88%

Single foundation  
**LONG SHAFT PUMP**  
**单基础长轴泵**



# LSC

### 用途及特点 / Applications and Features

LSC 型立式长轴泵是在吸收了国内外立式长轴泵设计和制造先进经验,为适应国内市场需求研制的先进成熟的系列产品。

LSC vertical long shaft pump is an advanced and mature series of products which has absorbed the advanced experience of vertical long shaft pump design and manufacturing to meet the domestic market demand.

### 运行数据 / Operation data

项目	技术参数
出口直径 /outlet diameter	DN=150~1000mm
流量 /Flow	Q=50~9400m <sup>3</sup> /s
扬程 /Lift	H=12~140m
转速 /Rotational Speed	n=595~2950rpm
电机功率 /Motor power	P=5.5~1600kW



Shaft, mixed flow pump

## WATER AND ELECTRICITY PUMP

### 轴、混流泵水电泵



# SLQZ(H)

#### 用途及特点 / Applications and Features

SLQZ(H)A 型轴（混）流潜水电泵是 YQGN 型潜水电机与 Z(H) LB 型立式轴（混）流泵泵段配套成机泵一体同轴传动的潜水电机组。主要用于大型河流型潜水泵站给排水。具有安装简便、运行可靠、不产生环境噪音和环境高温等优秀特点。以成为替代常规泵机组的国际潮流。

SLQZ(H)A type axial (mixed) flow submersible electric pump is a submersible unit with YQGN type submersible motor and Z(H)LB type vertical axial (mixed) flow pump section matching into a coaxial transmission of machine and pump. It is mainly used for water supply and drainage of large river-type submersible pumping stations. It has excellent features such as easy installation, reliable operation, no environmental noise and high ambient temperature. It has become the international trend to replace the conventional pumping unit.

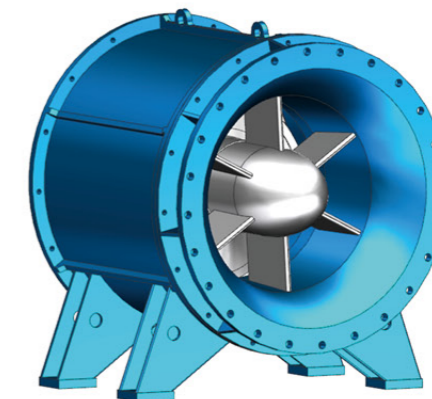
#### 运行数据 / Operation data

项目	技术参数
出口直径 / Outlet diameter	DN=1000~2000mm
流量 / Flow	Q = 6000 ~ 40000m <sup>3</sup> /h
扬程 / Lift	H = 1.9~18m
电机功率 / Motor power	P=60 ~ 1600kW

Submersible

## FULL FLOW PUMP

### 潜水全贯流泵



# SLQG

#### 用途及特点 / Applications and Features

潜水全贯流泵指由湿定子潜水三相异步电动机、轴流式一体化转轮、导叶体和吸水喇叭等组成的机电一体卧式（立式）运行大型排水装备

Submersible full flow pump refers to a large-scale drainage equipment that is composed of a wet stator submersible three-phase asynchronous motor, an axial flow integrated runner, a guide vane body, and a suction horn, and is an electromechanical integrated horizontal (vertical) operation

#### 运行数据 / Operation data

项目	技术参数
名义口径 / Outlet diameter	350 ~ 2600mm
扬程 / Lift	0 ~ 12m
流量 / Flow	0.2 ~ 20m <sup>3</sup> /s
功率 / power	7.5 ~ 2500kW;
电压 / voltage	380V, 660V, 6kV, 10kV;
水质条件 / Water quality conditions	水温 ≤ 50°C, PH 值 5 ~ 9 Water temperature ≤ 50 °C, pH value 5-9

submersible  
**SEWAGE PUMP**  
**潜水排污泵**



# QW

### 用途及特点 / Applications and Features

QW 型系列潜水排污泵是在引进国外先进技术的基础上研制成功的。具有节能效果显著，防缠绕、无堵塞、自动安装和自动控制等优点，该泵主要用于排送含固体颗粒及各种长纤维的淤泥、废水、城市生活用水。

QW 泵体积小、结构紧凑、效率高、功率为 15kW 以上产品，具有漏水检测、过热、过载保护功能，并可根据用户要求，配备具有液位控制的自动保护功能控制柜。QW 泵安装方式有自动藕合式安装和移动式安装两种。

QW series submersible sewage pump is successfully developed on the basis of the introduction of advanced foreign technology. It has the advantages of remarkable energy-saving effect, anti-winding, non-clogging, automatic installation and automatic control, etc. The pump is mainly used for discharging mud, wastewater and urban domestic water containing solid particles and various long fibers.

QW pump is small in size, compact in structure, high in efficiency, power is 15kW or more products, with water leakage detection, overheating, overload protection function, and can be equipped with automatic protection function control cabinet with liquid level control according to user requirements. qw pump installation methods are automatic coupling installation and mobile installation.

### 运行数据 / Operation data

项目	技术参数
出口直径 /Outlet diameter	DN ≤ 900mm
流量 /Flow	Q ≤ 7000m <sup>3</sup> /h
扬程 /Lift	H ≤ 60m
配用功率 /Matching power	P=1.5~550kW

Submersible  
**SLUDGE PUMP**  
**潜水污泥泵**



# QWN

### 用途及特点 / Applications and Features

QWN 型潜水污泥泵，是本公司在 QW 型泵的基础上进一步吸收国外先进技术推出的新型产品。主要用于市政工程、钢铁厂、发电厂、矿山及其它耐磨蚀场所，排放含固体颗粒及淤泥、废水之用。

QWN type submersible sludge pump is a new product launched by our company on the basis of QW type pump and further absorbing advanced foreign technology. It is mainly used in municipal projects, steel plants, power plants, mines and other wear-resistant places to discharge solid particles and sludge and wastewater.

### 运行数据 / Operation data

项目	技术参数
出口直径 /Outlet diameter	DN ≤ 900mm
流量 /Flow	Q ≤ 7000m <sup>3</sup> /h
扬程 /Lift	H ≤ 60m
配用功率 /Matching power	P=1.5~550kW

self-priming pump

**WITHOUT SEAL**

**无密封自控自吸泵**



**WFB**

#### 用途及特点 / Applications and Features

WFB 系列无密封自控自吸泵，该产品具有耐温、耐压、耐磨，“一次引流，终身自吸”等多种功能与优点。在一定条件下替代长轴泵、液下泵、潜水潜污泵等设备。在石油、电力、化工、钢铁、医药、焦化、电镀、环保、消防、市政、净水、国防军工、纺织印染、采掘选矿、民用建筑等行业中广泛应用，深受用户的好评。

WFB series self-control self-priming pump without seal, the product has a variety of functions and advantages such as temperature, pressure and wear resistance, "once priming, lifelong self-priming". Under certain conditions, it can replace long-shaft pumps, submerged pumps, submersible pumps and other equipment. It is widely used in petroleum, electric power, chemical industry, steel, medicine, coking, electroplating, environmental protection, fire-fighting, municipal, water purification, national defense, textile printing and dyeing, mining and mineral processing, civil construction and other industries, and is well received by users.

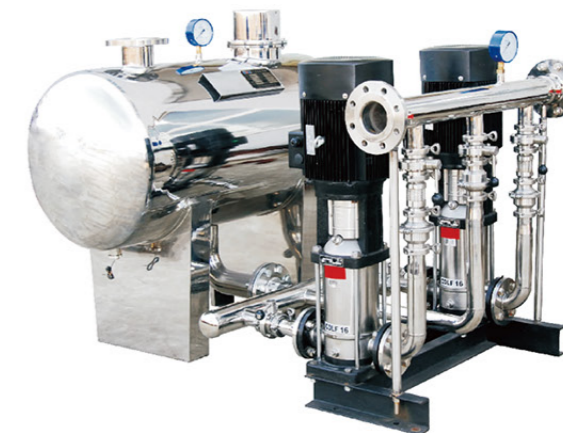
#### 运行数据 / Operation data

项目	技术参数
进出口直径 / Inlet and outlet diameter	DN=16~800mm
流量 / Flow	Q = 1 ~ 7000m <sup>3</sup> /h
扬程 / Lift	H = 5~125m
自吸高度 / Self-priming height	H=4~5m
介质温度 / Media temperature	T ≤ 90 °C

Non-negative pressure water

supply equipment

**无负压供水设备**



#### 用途及特点 / Applications and Features

管网叠压（无负压）变频给水系统是由无负压装置和恒压变频设备组成的给水系统。无负压装置分为开式和闭式，开式流量调节器为不锈钢水箱（称箱式无负压设备），闭式流量调节器为不锈钢无负压罐（称罐式无负压设备）。管网叠压（无负压）变频给水系统最大限度地利用了市政自来水管网的原有压力，对市政自来水管网不产生负压，用无负压罐取代老式水池，减少了二次污染，是供水领域新一代节能产品。

The pipe network stacked pressure (negative pressure) frequency water supply system is a water supply system composed of negative pressure-free device and constant pressure frequency equipment. Negative pressure device is divided into open type and closed type, open type flow regulator is stainless steel water tank (called box type negative pressure equipment), closed type flow regulator is stainless steel negative pressure tank (called tank type negative pressure equipment). The pipe network superimposed pressure (negative pressure-free) frequency water supply system maximizes the use of the original pressure of the municipal tap water network, does not produce negative pressure on the municipal tap water network, replaces the old pool with negative pressure-free tank, reduces secondary pollution, and is a new generation of energy-saving products in the field of water supply.

#### 运行数据 / Operation data

项目	技术参数
流量 / Flow	Q=0.4 ~ 200m <sup>3</sup> /h
扬程 / Lift	H=4 ~ 135m
电源 / Power supply	三相 380×50Hz/Three-phase 380×50Hz
液体温度 / Liquid temperature	T=0~70°C

vertical long-  
**SHAFT PUMP**  
**一体化预制泵站**



# LS

### 用途及特点 / Applications and Features

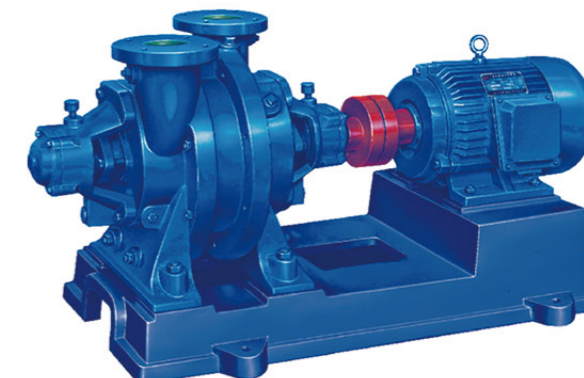
一体化预制泵站是一种新型污水自动化收集与提升系统，集潜水泵、泵站设备、除污格栅、控制系统及远程监控系统为一体，具有安装方便、质量可靠、土建工程量少、占地面积小、自动化程度高的特点，成为市政行业新的发展趋势。

Integrated prefabricated pumping station is a new type of sewage automatic collection and lifting system, integrating submersible pump, pumping station equipment, decontamination grille, control system and remote monitoring system, which has the characteristics of easy installation, reliable quality, less civil engineering, small footprint and high degree of automation, becoming a new development trend in municipal industry.

### 运行数据 / Operation data

项目	技术参数
筒体直径 /Cylinder diameter	DN=1200 ~8000mm
筒体高度 /Cylinder height	H ≤ 15000mm
水泵功率 /Water pump power	P = 0.75~315kw
处理量 /Processing capacity	400000 t/d

**VACUUM PUMP**  
**真空泵**



# SZ、SK

### 用途及特点 / Applications and Features

SZ、SK 系列水环式真空泵及压缩机是用来抽吸或压缩空气和其它无腐蚀性、不溶于水、不含有固体颗粒的气体，以便在密闭容器中形成真空和压力。吸入的气体中允许混有少量的液体。该类泵广泛应用于机械、石油、化工、制药、食品、陶瓷、制糖、印染、冶金等。

SZ, SK series water ring vacuum pumps and compressors are used to pump or compress air and other non-corrosive, water insoluble, solid particle free gases to form vacuum and pressure in a closed container. A small amount of liquid is allowed to be mixed with the absorbed gas.

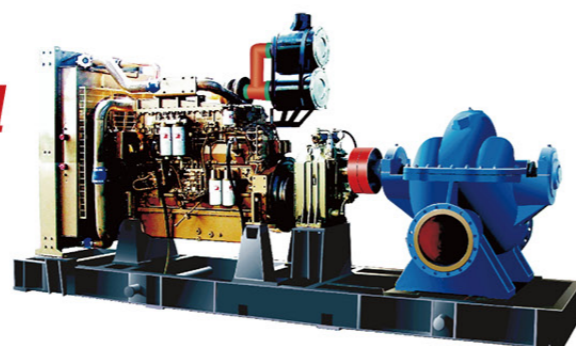
These pumps are widely used in machinery, petroleum, chemical, pharmaceutical, food, ceramics, sugar, printing and dyeing, metallurgy, etc.

### 运行数据 / Operation data

项目	技术参数
排气量 /Exhaust volume	1.5-12m <sup>3</sup> /min
真空度 /Vacuum Level	0.093Mpa-Mpa
压力 /Pressure	4-22kw
介质温度 /Media temperature	T=-10 ~ 40°C
工作液 /Working fluid	标准温度 15°C (范围 0-35°C) Standard temperature 15 °C (range 0-35 °C)

emergency/fire fighting diesel  
**WATER PUMP UNIT**

**应急 / 消防柴油机水泵机组**



## BC/XBC

### 用途及特点 / Applications and Features

应急 / 消防柴油机水泵机组是微电子技术、计算机技术、信息处理技术、工业自动化控制技术、机械设计与制造和通讯技术为一体的高新技术的产物。

BC 系列应急柴油机水泵机组，主要应用于现代冶金炉或设备的高温部件的冷却水系统，如钢厂炼铁高炉、铁合金电炉、连铸机结晶器、轧钢加热炉、转炉烟罩等，以及向反应堆提供冷却水。

XBC 系列消防柴油机水泵机组，主要应用于发电厂、化工厂、高层建筑、大型饭店、宾馆、机场、商厦、油库、煤气站等领域的生产、消防供水。

XBC 系列消防自动稳压柴油机水泵机组。主要用于自动稳压供水装置。稳压泵通过电接点压力表，经自控装置 (PLC) 自动控制启动或停机，自动维持在设定的压力。稳压泵和消防泵互为备用。

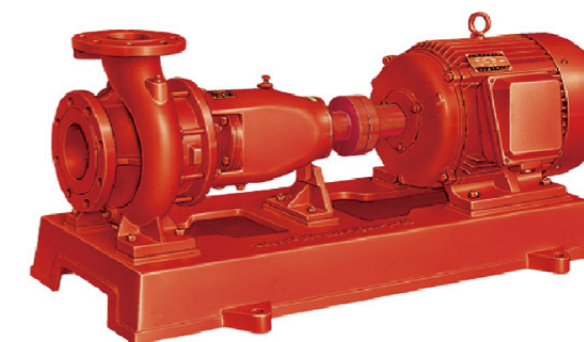
Emergency/fire diesel engine pump unit is the product of microelectronics technology, computer technology, information processing technology, industrial automation control technology, mechanical design and manufacturing and communication technology.

BC series emergency diesel pump unit is mainly used in cooling water system of high temperature parts of modern metallurgical furnace or equipment, such as iron smelting blast furnace, ferroalloy electric furnace, continuous casting machine mold, steel rolling furnace, converter smoke hood, and to provide cooling water to the reactor.

XBC series diesel fire pump unit, mainly used in power plants, chemical plants, high-rise buildings, large hotels, hotels, airports, commercial buildings, oil depots, gas stations and other fields of production, fire water supply.

XBC series fire protection automatic pressure stabilized diesel pump unit. Mainly used for automatic pressure regulating water supply device. Stabilized pressure pump through the electric contact pressure gauge, automatic control device (PLC) to start or stop, automatically maintain at the set pressure. The stabilized pressure pump and the fire pump are alternate.

**FIRE PUMP**  
**消防泵**



## XBD-I

### 用途及特点 / Applications and Features

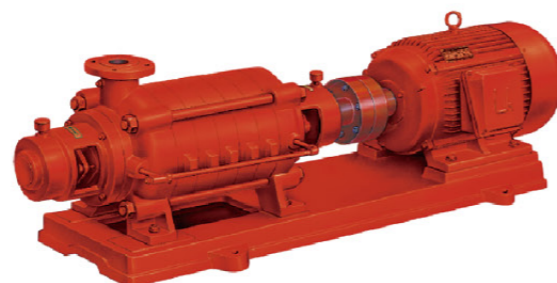
XBD 系列消防泵组，是我公司根据市场需要开发的新产品之一。本产品依据国际标准 ISO2858 及国家新颁布的国标 GB6245《消防泵性能要求和试验方法》的规范要求，采用先进的水力模型，结合卧式多级泵的特点设计制造的专用消防泵。产品具有效率高、汽蚀性能好、振动小、噪音低、运行平稳等优点，广泛适用与工业与民用建筑等各类消防及生活（生产）给水，用于输送物理化学性质类似于清水的液体。

XBD series fire pump group, is one of the new products developed by our company according to the market needs. This product according to the international standard ISO2858 and the national new national standard GB6245 fire pump performance requirements and test methods" specification requirements, the use of advanced hydraulic model, combined with the characteristics of horizontal multi-stage pump design and manufacturing of special fire pump. The product has the advantages of high efficiency, good cavitation performance, low vibration, low noise, smooth operation, widely used in industrial and civil buildings and other kinds of fire and living (production) water supply, for the delivery of physical and chemical properties similar to clear water liquid.

### 运行数据 / Operation data

项目	技术参数
进口直径 /Inlet diameter	DN=50~200mm(2"-8")
流量 /Flow	Q=5~110L/s
扬程 /Lift	H = 0.31~1.27Mpa
转速 /Rotational Speed	n=2900r/min、1450r/min
配用功率 /Matching power	P=4~110kW
密封 /Sealing	填料密封、机械密封 /Packing seal,mechanical seal

## FIRE PUMP 消防泵



# XBD-T

### 用途及特点 / Applications and Features

XBD 系列消防泵组, 是我公司根据市场需要开发的新产品之一。本产品依据国际标准 ISO2858 及国家新颁布的国标 GB6245 《消防泵性能要求和试验方法》的规范要求, 采用先进的水力模型, 结合卧式多级泵的特点设计制造的专用消防泵。产品具有效率高、汽蚀性能好、振动小、噪音低、运行平稳等优点, 广泛适用与工业与民用建筑等各类消防及生活 (生产) 给水, 用于输送物理化学性质类似于清水的液体。

XBD series fire pump group, is one of the new products developed by our company according to the market needs. This product according to the international standard ISO2858 and the national new national standard GB6245 fire pump performance requirements and test methods" specification requirements, the use of advanced hydraulic model, combined with the characteristics of horizontal multi-stage pump design and manufacturing of special fire pump. The product has the advantages of high efficiency, good cavitation performance, low vibration, low noise, smooth operation, widely used in industrial and civil buildings and other kinds of fire and living (production) water supply, for the delivery of physical and chemical properties similar to clear water liquid.

### 运行数据 / Operation data

项目	技术参数
进口直径 /Inlet diameter	DN=50~150mm(2"-8")
流量 /Flow	Q = 5 ~ 45L/s
扬程 /Lift	H = 0.36~2.63Mpa
转速 /Rotational Speed	n=1480r/min
配用功率 /Matching power	P=4~180kW

## FIRE PUMP 消防泵



# XBD-DL

### 用途及特点 / Applications and Features

XBD 系列消防泵组, 是我公司根据市场需要开发的新产品之一。本产品依据国际标准 ISO2858 及国家新颁布的国标 GB6245 《消防泵性能要求和试验方法》的规范要求, 采用先进的水力模型, 结合卧式多级泵的特点设计制造的专用消防泵。产品具有效率高、汽蚀性能好、振动小、噪音低、运行平稳等优点, 广泛适用与工业与民用建筑等各类消防及生活 (生产) 给水, 用于输送物理化学性质类似于清水的液体。

XBD series fire pump group, is one of the new products developed by our company according to the market needs. This product according to the international standard ISO2858 and the national new national standard GB6245 fire pump performance requirements and test methods" specification requirements, the use of advanced hydraulic model, combined with the characteristics of horizontal multi-stage pump design and manufacturing of special fire pump. The product has the advantages of high efficiency, good cavitation performance, low vibration, low noise, smooth operation, widely used in industrial and civil buildings and other kinds of fire and living (production) water supply, for the delivery of physical and chemical properties similar to clear water liquid.

### 运行数据 / Operation data

项目	技术参数
进口直径 /Inlet diameter	DN=40~150mm(1.5"-6")
流量 /Flow	Q = 1 ~ 50L/s
扬程 /Lift	H = 0.3~2Mpa
转速 /Rotational Speed	n=2900r/min、1450r/min
配用功率 /Matching power	P=2.2~160kW
密封 /Sealing	填料密封、机械密封 /Packing seal, mechanical seal

## FIRE PUMP 消防泵



# XBD-G

### 用途及特点 / Applications and Features

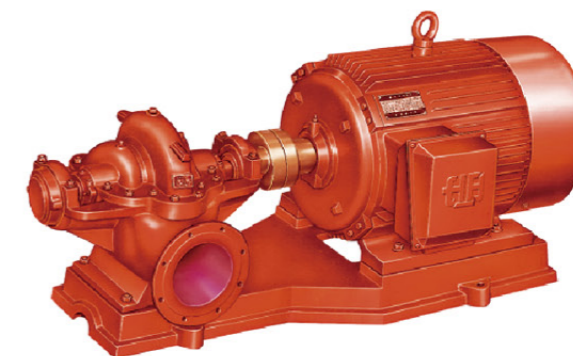
XBD 系列消防泵组,是我公司根据市场需要开发的新产品之一。本产品依据国际标准 ISO2858 及国家新颁布的国标 GB6245 《消防泵性能要求和试验方法》的规范要求,采用先进的水力模型,结合卧式多级泵的特点设计制造的专用消防泵。产品具有效率高、汽蚀性能好、振动小、噪音低、运行平稳等优点,广泛适用与工业与民用建筑等各类消防及生活(生产)给水,用于输送物理化学性质类似于清水的液体。

XBD series fire pump group, is one of the new products developed by our company according to the market needs. This product according to the international standard ISO2858 and the national new national standard GB6245 fire pump performance requirements and test methods" specification requirements, the use of advanced hydraulic model, combined with the characteristics of horizontal multi-stage pump design and manufacturing of special fire pump. The product has the advantages of high efficiency, good cavitation performance, low vibration, low noise, smooth operation, widely used in industrial and civil buildings and other kinds of fire and living (production) water supply, for the delivery of physical and chemical properties similar to clear water liquid.

### 运行数据 / Operation data

项目	技术参数
进口直径 /Inlet diameter	DN=25~300mm(1"-12")
流量 /Flow	Q = 0.6~240L/s
扬程 /Lift	H = 0.22~1.25Mpa
转速 /Rotational Speed	n=2900r/min、1450r/min
配用功率 /Matching power	P=0.75~250kW
密封 /Sealing	机械密封 /mechanical seal

## FIRE PUMP 消防泵



# XBD-S

### 用途及特点 / Applications and Features

XBD 系列消防泵组,是我公司根据市场需要开发的新产品之一。本产品依据国际标准 ISO2858 及国家新颁布的国标 GB6245 《消防泵性能要求和试验方法》的规范要求,采用先进的水力模型,结合卧式多级泵的特点设计制造的专用消防泵。产品具有效率高、汽蚀性能好、振动小、噪音低、运行平稳等优点,广泛适用与工业与民用建筑等各类消防及生活(生产)给水,用于输送物理化学性质类似于清水的液体。

XBD series fire pump group, is one of the new products developed by our company according to the market needs. This product according to the international standard ISO2858 and the national new national standard GB6245 "fire pump performance requirements and test methods" specification requirements, the use of advanced hydraulic model, combined with the characteristics of horizontal multi-stage pump design and manufacturing of special fire pump. The product has the advantages of high efficiency, good cavitation performance, low vibration, low noise, smooth operation, widely used in industrial and civil buildings and other kinds of fire and living (production) water supply, for the delivery of physical and chemical properties similar to clear water liquid.

### 运行数据 / Operation data

项目	技术参数
进口直径 /Inlet diameter	DN=150~300mm(6"-12")
流量 /Flow	Q = 30 ~ 200L/s
扬程 /Lift	H = 0.3~2Mpa
转速 /Rotational Speed	n=2980r/min、1450r/min
配用功率 /Matching power	P=2.2~160kW
密封 /Sealing	填料密封、机械密封 /Packing seal,mechanical seal

fire-fighting water  
**SUPPLY EQUIPMENT**  
**消防供水设备**



**QF**

**用途及特点 / Applications and Features**

QF 型系列消防气压给水设备是依据测定上海市企业标准 Q/VHAP3《消防气压给水设备的性能要求和试验方法》并参考国家和行业相关标准而设计的新型消防专用固定灭火设备。设备广泛适用于消防给水系统。具有能与消防信号并联启动消防泵接口；并在局部可取代消防水箱；能根据用户的需要与消防控制中心联网；消防主泵的启动形式可根据用户要求采取软启动装置代替常用的降压启动形式及双电源启动及双电源自动切换等功能，以满足消防系统的设计要求。

适用范围：城乡水厂泵站加压泵站、居住区宾馆饭店及其他大型公共建筑的生活供水及消防用水、各类工矿企业的生产和生活用水、采暖空调的冷热水循环系统、污水处理系统农业排灌喷灌及音乐喷泉等。

QF series fire pressure water supply equipment is a new type of fire special fixed fire extinguishing equipment designed according to the determination of Shanghai enterprise standard Q/VHAP3 Performance Requirements and test Methods of Fire pressure water Supply equipment" and reference to the relevant national and industrial standards. The equipment is widely used in fire water supply system. The interface can start the fire pump in parallel with the fire signal; And locally can replace the fire water tank; Can be connected to the fire control center according to the needs of users; In order to meet the design requirements of fire control system, soft starting device can be adopted to replace the common depressurization starting form and the functions of double power supply starting and automatic switching.

Applicable scope: urban and rural water plant pump station pressure pump station, residential hotels, restaurants and other large public buildings for domestic water supply and fire water, all kinds of industrial and mining enterprises production and living water, heating and air conditioning cold and hot water circulation system, sewage treatment system agricultural drainage irrigation sprinkler irrigation and music fountain



PUMP SERIES  
PRODUCTS

# 控制系统 系列

驭水利世，泵动未来



## POWER CABINET GP、BT 动力柜

### 用途及特点 /Applications and Features

GP 型系列电气控制柜依据行业标准及其他相关行业标准精心设计，产品功能齐全，各种型号具有主回路短路、缺相、过载等保护。广泛应用于各种场合，它除单控型产品以外，凡有主、备控制的产品，一律具有故障泵自行关闭，备用泵自行投入（备泵自投）的功能。

Bt 型系列变频调速控制柜依据相关行业标准并在水泵多年应用基础上精心设计而成。具有变频范围宽、精度高的特点，广泛应用于风机、水泵、传动、纺纱等电机调速控制，保护功能齐全。

GP series electrical control cabinets are carefully designed according to industry standards and other related industry standards. The products are fully functional. Various models have the protection of main circuit short circuit, lack of phase, overload and so on. Widely used in a variety of occasions, in addition to the single control products, where there is a master, backup control products, all have the fault pump shut down, standby pump input (standby pump self) function.

Bt series frequency conversion speed control cabinet according to the relevant industry standards and on the basis of many years of pump application carefully designed. With the characteristics of wide frequency conversion range, high precision, widely used in fan, water pump, drive, spinning motor speed control, complete protection function.



### 运行数据 /Operation data

项目	技术参数
输出功率 /Output power	0.75kW ~ 315kW 以铭牌标准 /0.75kW~315kW by nameplate standard
工作电压 /Operating Voltage	AC220V、AC380V、AC660V/ 50HZ
过流动作时间	1 秒 ~ 5 分钟 /1 second ~ 5 minutes
缺相动作时间	小于 2 秒 /Less than 2 seconds
短路动作时间	小于 0.1 秒 /less than 0.1 sec

## submersible SLUDGE PUMP KYN28-12/HXGN-12 高压配电柜

### 用途及特点 /Applications and Features

KYN28A-12 铠装中置式金属封闭开关设备是在吸收国内外先进制造技术的基础上自行设计开发的新产品，可取代各种老型的金属封闭开关设备。适用于 3.6~12kV 三相交流 50Hz 电网，作为接受和分配电能，并对电路实行控制、监测和保护之用。

HXGN-12 型环网柜是一组高压开关设备装在钢板金属柜体内或做成拼装间隔式环网供电单元的电气设备，其核心部分采用负荷开关和熔断器，具有结构简单、体积小、价格低、可提高供电参数和性能以及供电安全等优点。且环网柜运行可靠安全，维修量很小，运行费用低，比起装有断路器的开关柜，优势很突出。它被广泛用于城市住宅小区、高层建筑、大型公共建筑、工厂企业等负荷中心的配电站以及箱式变电站中。

KYN28A-12 armored mid-mounted metal-enclosed switchgear is a new product designed and developed by itself on the basis of absorbing advanced manufacturing technology at home and abroad, which can replace all kinds of old metal-enclosed switchgear. It is suitable for 3.6~12kV three-phase AC 50Hz power grid, as receiving and distributing electric energy, and implementing control, monitoring and protection for the circuit.

HXGN-12 type ring network cabinet is a group of high-voltage switchgear installed in the metal cabinet of steel plate or made into a spaced ring network power supply unit of electrical equipment, the core part of which adopts load switch and fuse, with the advantages of simple structure, small volume, low price, can improve power supply parameters and performance and power supply safety. And the ring network cabinet operates reliably and safely, with very little maintenance and low operating costs, which is an outstanding advantage over the switchgear equipped with circuit breakers. It is widely used in the distribution stations of load centers such as urban residential communities, high-rise buildings, large public buildings, factories and enterprises, as well as in box-type substations.



## low-voltage PDC MNS/GCS/GCK/GGD/XL-21 低压配电柜

### 用途及特点 /Applications and Features

MNS 型低压抽出式成套开关设备为适应电力工业发展的需求，参考国外 MNS 系列低压开关柜设计并加以改进开发的高级型低压开关柜，该产品符合 GB7251、VDE660 和 ZBK36001-89 等标准，能广泛用于各种低压配电系统。

GCS 型低压抽出式开关柜具有较高技术性能指标、能够适应电力市场发展需要并可与现有引进产品竞争的低压抽出式开关柜。

GCK 系列低压抽出式配电柜，并具有结构先进，外形美观，防护等级高，安全可靠，维护方便等特点，可作为低压成套开关设备的更新换代产品。

GGD 型交流低压配电柜适用于发电厂、变电站、厂矿企业等电力用户的交流 50Hz，额定工作电压 380V 额定工作电流 3150A 的配电系统，作为动力、照明及配电设备的电能转换、分配与控制之用。

MNS-type low-voltage pull-out switchgear is an advanced low-voltage switchgear designed and improved with reference to foreign MNS series low-voltage switchgear to meet the development needs of the electric power industry.

GCS type low-voltage withdrawable switchgear has high technical performance indexes, can adapt to the development needs of the electric power market and can compete with the existing introduced products of low-voltage withdrawable switchgear.

GCK series low-voltage pull-out switchgear has advanced structure, beautiful appearance, high protection level, safety and reliability, convenient maintenance, etc. It can be used as a new generation of low-voltage switchgear.

GGD type AC low-voltage switchgear is suitable for power distribution system with AC 50Hz, rated working voltage 380V and rated working current 3150A in power plants, substations, factories and mining enterprises and other power users, and is used for power conversion, distribution and control of power, lighting and distribution equipment.



## Automatic Control Of Pumping Station And Video Surveillance System 泵站自动控制及视频监控系统

### 用途及特点 /Applications and Features

现代泵站为了更好地监控、维护、安全使用设备，需对各设备安全运行指标和性能参数进行在线检测和监控，通过组网通讯的形式，组态上位机集中控制。同时通过摄像监控的形式，对站区的安全死点及设备现场环境进行实时监控和录像，最大限度保证泵站的安全。上位机集中控制系统主要由 LCU 屏、IO 子站、监控计算机、交换机、打印机、时钟及语音报警系统、泵阀传感器及仪表等现场设备等组成。视频监控系统主要由各摄像头、刻录机、交换器、光电收发器、视频工作站等组成。In order to better monitor, maintain and safely use equipment, modern pumping stations need to detect and monitor the safe operation indicators and performance parameters of each equipment online, and configure the centralized control of the host computer through the form of network communication. At the same time, through the form of camera monitoring, real-time monitoring and recording of the safety dead spot of the station area and the on-site environment of the equipment are carried out to ensure the safety of the pumping station to the greatest extent. The centralized control system of the host computer is mainly composed of LCU screen, IO substation, monitoring computer, switch, printer, clock and voice alarm system, pump valve sensor and instrument and other field devices. The video surveillance system is mainly composed of cameras, recorders, switches, photoelectric transceivers, video workstations, etc.

### 应用范围 /Apply limits

该产品主要应用于市政排水泵站、雨水排水泵站、道路排水泵站，大型建筑排水泵站、污水处理厂及各类泵站升级改造等。

The product is mainly used in municipal drainage pumping stations, rainwater drainage pumping stations, road drainage pumping stations, large-scale building drainage pumping stations, sewage treatment plants and various pumping station upgrades.



### 项目案例 /Article case





## SERVICE SCOPE 业务范围

公司的技术团队有着扎实的理论基础及丰富的工程经验，曾涉足煤化工、石油化工、造纸印染、食品、制药等十余种工业废水领域，在市政污水、流域、河道治理、生物零排放冲洗厕所等领域有多项案例，先后设计并参与调试的工程多达百余项。

The company's technical team has a solid theoretical foundation and rich engineering experience. It has been involved in more than 10 kinds of industrial wastewater fields such as coal chemical industry, petrochemical industry, paper printing and dyeing, food and pharmaceutical industry. It has a number of cases in the fields of municipal sewage, river basin, river treatment, biological zero discharge toilet flushing and so on. It has successively designed and participated in the commissioning of more than 100 projects.

water  
treatment

# 水处理 系列

驭水利世，泵动未来



### 工业 /industry

石油化工、煤化工、造纸印染、  
制药、食品发酵、养殖废水废水  
脱盐回用及零排放

Petrochemical, coal chemical,  
papermaking, printing and dyeing,  
pharmaceutical, food fermentation,  
aquaculture wastewater desalination,  
reuse, and zero discharge

### 市政 /municipal administration

市政及工业园区、垃圾渗滤液  
Municipal and industrial parks,  
landfill leachate

### 水环境 /water environment

流域、河道黑臭水体整治、农村等小型  
城镇分散式治理、智慧水务  
Watershed, river black and odorous water treatment,  
decentralized management of small towns in rural  
areas, and smart water management

### Industrial wastewater reuse

Chemical wastewater  
Coal mine wastewater  
Power industry  
Pharmaceutical wastewater  
Printing and dyeing wastewater

### Municipal sewage treatment

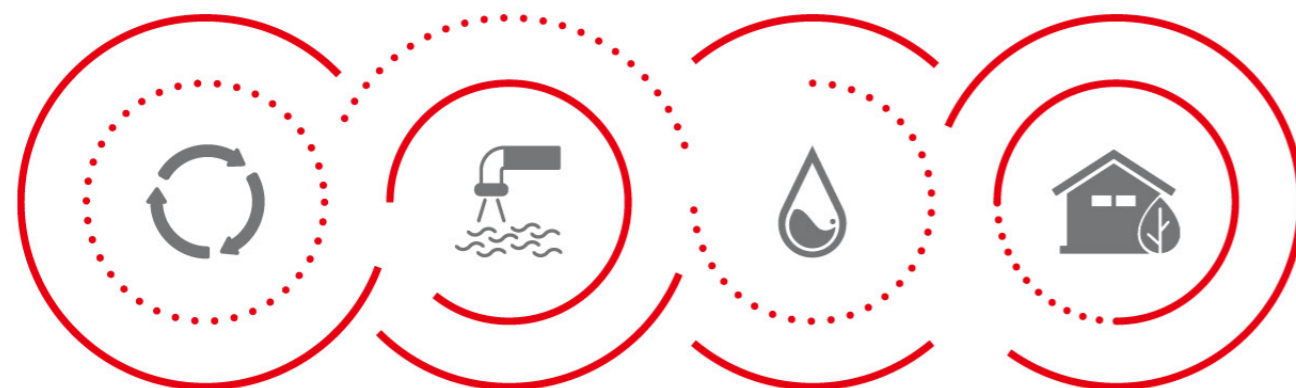
Class I a compliance  
Upgrading of bid submission

### Purified water treatment

Brackish water  
Other water supply  
Urban water supply

### Decentralized sewage treatment

Environmental protection toilet  
Rural sewage



#### 工业废水回用

化工废水、煤矿废水  
电力行业、制药废水  
印染废水

#### 市政污水处理

I级 A 达标  
提标升级改造

#### 纯净水水处理

苦咸水  
其他供水  
城市供水

#### 分散式污水处理

环保厕所  
乡村污水

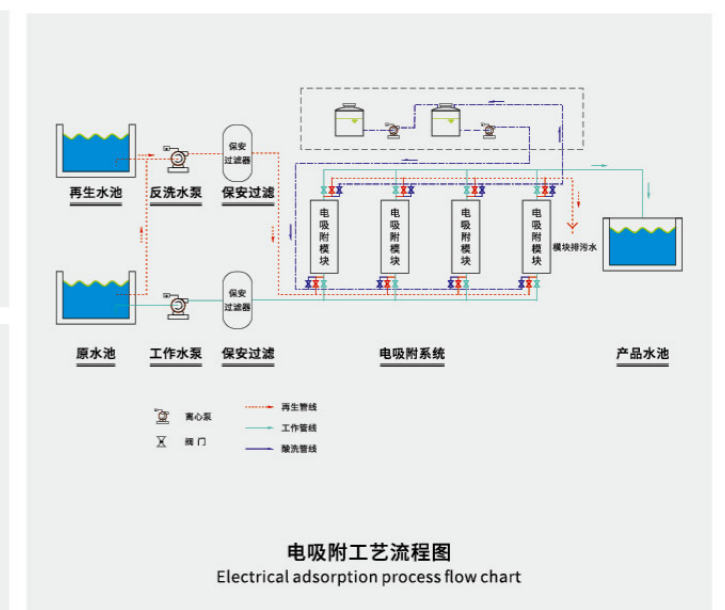
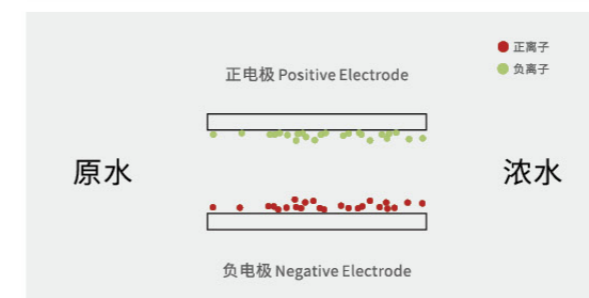
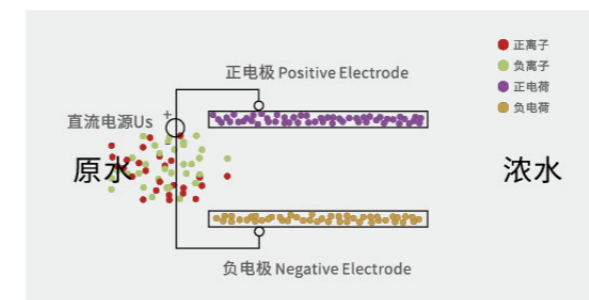
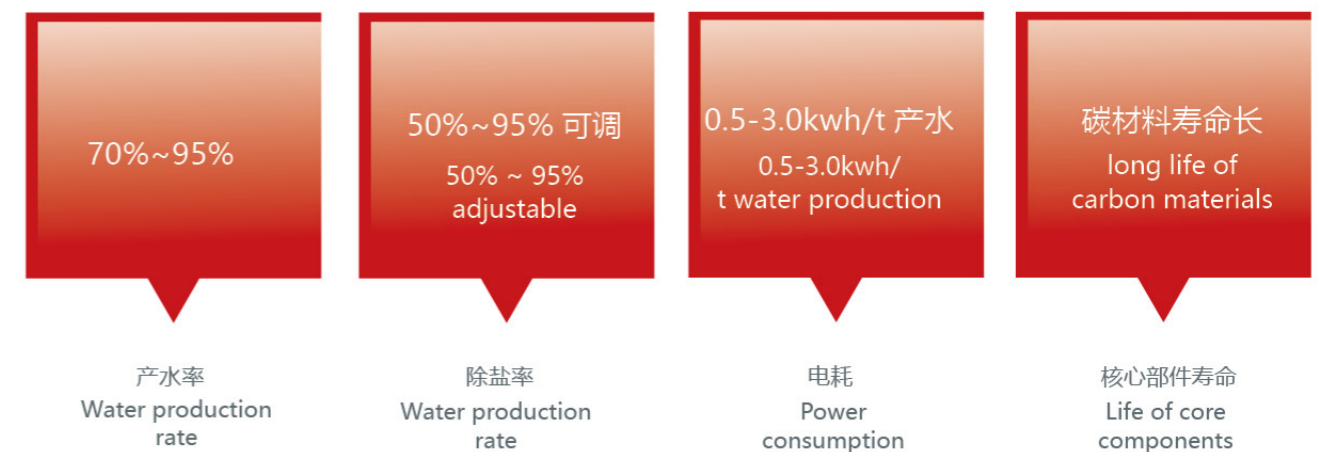
## ELECTRO ADSORPTION 电吸附技术

### 产品概述

电吸附技术 (Electrosorb Technology, 简称 EST) 又称电容性除盐技术 (Capacitive Deionization / Desalination Technology), 是 20 世纪 90 年代末开始兴起的一项新型水处理技术。其基本原理是基于电化学中的双电层理论, 利用带电电极表面的电化学特性来实现水中带电粒子的去除、有机物的分解等目的, 该技术为国内首创, 处理达标回用, 工艺路线简练。

### PRODUCT OVERVIEW

Electro adsorption technology (EST), also known as capacitive desalination technology, is a new water treatment technology rising in the late 1990s. Its basic principle is based on the double-layer theory in electrochemistry, and the electrochemical characteristics of the surface of charged electrode are used to realize the removal of charged particles in water and the decomposition of organic matter. This technology is the first in China. It can be treated up to standard and reused, and the process route is simple.



## DYNAMIC MEMBRANE DEVICE 动态膜装置

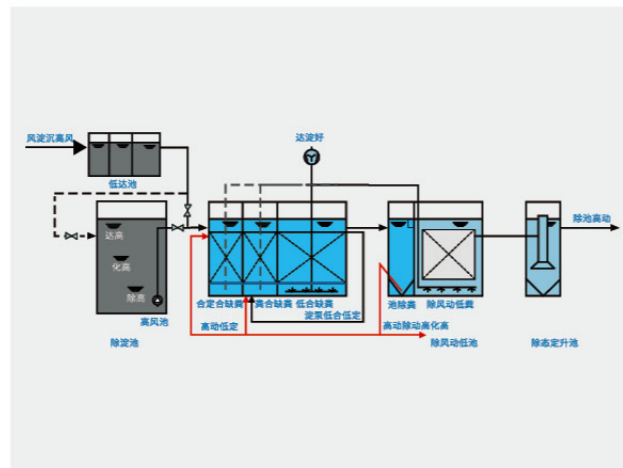
### 产品概述 / PRODUCT OVERVIEW

公司独创微动力内置式动态膜，低水头情况下重力出水，无需抽吸泵，无需大量曝气，膜系统运行动力几乎为零，实现快速挂膜大通量低成本稳定运行，快速反洗能突出反映总氮。

The company's original micro power built-in dynamic membrane, gravity water under low water head, no suction pump, no large amount of aeration, the operation power of membrane system is almost zero, realizing rapid membrane hanging, large flux, low-cost and stable operation, and rapid backwashing can highlight the reflection of total nitrogen.

### 工艺特点 / APPLICATION AREA

- 采用成熟的 A2/O 生化处理工艺路线，并结合运行方式的改进，实现了低溶解氧的运行方式，提高了处理效率，降低了运行费用；
- 采用 DMBR 单元，具有良好的去除污水中的有机物和较好的脱除总氮功能，以满足排放标准的要求；
- 具有较好的耐冲击负荷能力，以适应水质、水量变化的特点；
- 采用污泥消解工艺，大大降低污泥的生成量；
- 充分考虑二次污染产生的可能性，将其影响降低至最低程度；
- 系统处理设施全部设置在地表以下，不占地表面积，可作绿化，又利于防冻



- Using the mature A2 / O biochemical treatment process route and combined with the improvement of operation mode, the operation mode of low dissolved oxygen is realized, the treatment efficiency is improved and the operation cost is reduced;
- DMBR unit is adopted, which has good functions of removing organic matter and total nitrogen in sewage, so as to meet the requirements of discharge standards;
- It has good impact load resistance to adapt to the changes of water quality and quantity;
- The sludge digestion process is adopted to greatly reduce the amount of sludge;
- Fully consider the possibility of secondary pollution and minimize its impact;
- The system treatment facilities are all set below the surface, which does not occupy the surface area. They can be used for greening and anti freezing



## HIGH EFFICIENCY MAGNETIC COAGULATION 高效磁混凝

### 产品概述 / PRODUCT OVERVIEW

高效磁澄清技术就是在传统的混凝澄清工艺中同步加入比重为 4.8~5.1 的磁粉，使之与污染物絮凝结合成一体，以加强混凝、絮凝的效果，使生成的絮体密度更大、更结实，从而达到高速沉降的目的。表面负荷高达  $20 \text{ m}^3 / \text{m}^2$ ， $h \sim 40 \text{ m}^3 / \text{m}^2 \text{ h}$ 。

High efficiency magnetic clarification technology is to synchronously add magnetic powder with a specific gravity of 4.8 ~ 5.1 in the traditional coagulation and clarification process, so as to integrate it with the flocculation of pollutants, so as to strengthen the effect of coagulation and flocculation, make the floc density larger and stronger, and achieve the purpose of high-speed settlement. Surface loads up to  $20 \text{ m}^3 / \text{m}^2$ ， $h \sim 40 \text{ m}^3 / \text{m}^2 \text{ h}$ 。

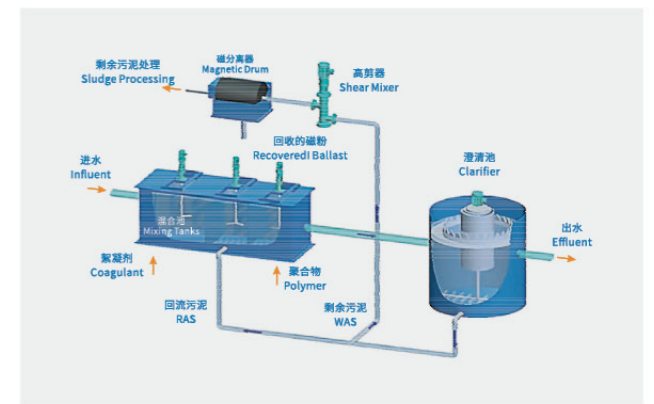
### 功能 / FUNCTION

去除 SS、总磷、颗粒及部分胶体类 COD、重金属、除磷、除藻、软化。

Remove SS, total phosphorus, particles and some colloidal cod, heavy metals, phosphorus, algae and softening.

### 应用领域 / APPLICATION AREA

- 污水厂提标改造
- 深度除磷除悬浮物
- 河道黑臭水流域治理
- 重金属废水处理
- 含油废水处理
- 净水厂等
- Upgrading of sewage treatment plant
- Deep phosphorus and suspended solids removal
- River black and smelly water and watershed treatment
- Heavy metal wastewater treatment
- Oily wastewater treatment
- Water purification plant, etc



## MUD SCRAPER

### 刮泥机

#### 产品概述 /PRODUCT OVERVIEW

组成部分：刮泥机由驱动装置、工作桥、主刮泥装置、辅助刮泥装置、中心转盘、撇渣装置、溢流堰板和挡渣板、集电装置等组成。对于中心进水周边出水沉淀池，一般还需设置导流筒。用于为达到最佳沉淀排泥效果。

Components: mud scraper is composed of driving device, working bridge, main mud scraping device, auxiliary mud scraping device, central turntable, slag skimming device, overflow weir plate and slag stopper, power collection device, etc. For the center inlet and peripheral discharge sedimentation tank, generally also need to set the guide cylinder. Used to achieve the best sedimentation and mud discharge effect.



#### 功能 /FUNCTION

刮泥机，是一种将淤泥从河道里清理出来的一种机器，用于城市污水处理厂、自来水厂以及工业废水处理中直径较大的圆形沉淀池中，排除沉降在池底的污泥和撇除池面的浮渣。

Mud scraper, a kind of machine to clean out the sludge from the river, is used in urban sewage treatment plants, water treatment plants and industrial wastewater treatment in larger diameter circular sedimentation ponds to exclude the sludge settled at the bottom of the pond and skim the floating sludge on the surface of the pond.

#### 应用领域 /APPLICATION AREA

- 刮泥机可广泛应用于城市、化工、轻纺、冶金等行业的污水处理工程中。其结构合理、效率高、操作维修方便，是一种较理想的污水处理工程配套设施。
- 刮泥机适用于污水处理厂重力式污泥浓缩池，将浓缩污泥刮集至池底中心集泥坑，以便进一步作污泥脱水处理的设备。
- 刮泥机适用市政工程、制药业、酿酒、食品类、饮品、化工厂、皮革制品、焊材、原油、印染厂等每个行业的污泥脱水机。

- The mud scraper can be widely used in the sewage treatment project of city, chemical, light textile, metallurgy and other industries. Its reasonable structure, high efficiency, easy operation and maintenance, is a more ideal supporting facilities for sewage treatment projects.
- The mud scraper is suitable for gravity sludge thickening tank in wastewater treatment plant to scrape the thickened sludge to the bottom center of the tank to collect mud pit for further sludge dewatering treatment.
- The scraper is suitable for sludge dewatering machine in every industry such as municipal engineering, pharmaceutical industry, brewing, food type, beverage, chemical factory, leather products, welding material, crude oil, printing and dyeing factory, etc.

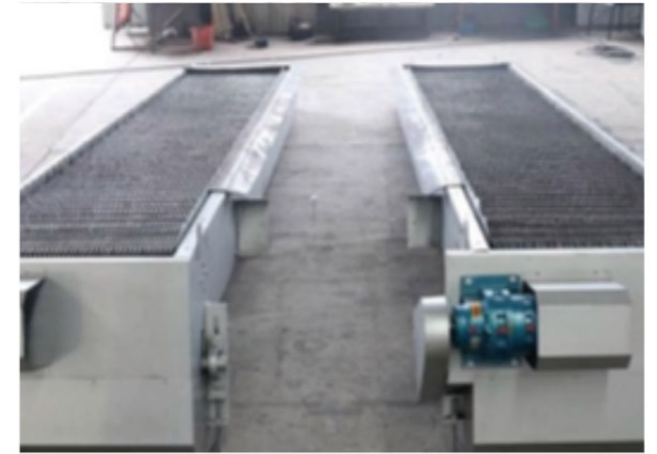
## MECHANICAL GRILLE

### 机械格栅

#### 产品概述 /PRODUCT OVERVIEW

机械格栅是能够自动清除附在格栅上的垃圾的一种格栅设备。最大优点是自动化程度高、分离效率高、动力消耗小、无噪音、耐腐蚀性能好，在无人看管的情况下可保证连续稳定工作，设置了过载安全保护装置，在设备发生故障时，会自动停机，可以避免设备超负荷工作。

Mechanical grating is a kind of grating equipment that can automatically remove the garbage attached to the grating. The biggest advantages are high automation, high separation efficiency, low power consumption, no noise, good corrosion resistance, continuous and stable work under unattended condition, and overload safety protection device, which will automatically stop when the equipment fails and can avoid overload work.



#### 功能 /FUNCTION

回转式机械格栅能有效地分离固体物质，有效地降低水中悬浮物（SS）、化学耗氧量（COD），减轻后续工序的处理负荷。同时也应用于工业生产中固液分离和回收有用物质。

The rotary mechanical grid can effectively separate solids, effectively reduce suspended solids (SS) and chemical oxygen consumption (COD) in water, and reduce the treatment load of subsequent processes. It is also used in industrial production for solid-liquid separation and recovery of useful substances.

#### 应用领域 /APPLICATION AREA

- 用于造纸、屠宰、皮革、制糖、酿酒、食品加工、纺织、印染、石化等工业废水处理中，去除悬浮物、漂浮物、沉淀物等固态物质；
- 用于造纸、酒精、淀粉、食品加工等行业中的回收纤维、渣料等有用物质；
- 用于城市污水处理中代替初沉池。

- Used in industrial wastewater treatment such as papermaking, slaughtering, leather, sugar, brewing, food processing, textile, printing and dyeing, petrochemicals, etc. to remove solids such as suspended matter, floating matter and sediment.
- Useful materials such as recovered fibers and residues used in paper, alcohol, starch, food processing and other industries.
- Used in place of primary sedimentation tanks in municipal wastewater treatment.

## BIOLOGICAL TOILET 零排放智能生态厕所

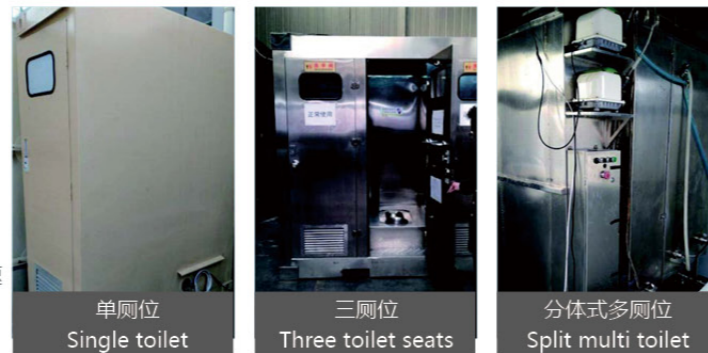
### 产品概述 /PRODUCT OVERVIEW

- 一次注水，自动循环，节约水资源；
- 粪便彻底分解为水和二氧化碳，实现零排放无污染；
- 无需上下水管道配套，减少场地限制；
- 安全无异味、无液体外泄，卫生舒适；
- 高科技建筑产品，模块式设计，工厂化制造，现场装配，快速建造，外观精美，既可新建也可原地改造；

- One time water injection, automatic circulation, saving water resources;
- Feces are completely decomposed into water and carbon dioxide to achieve zero emission and no pollution;
- There is no need for supporting water supply and drainage pipelines to reduce site restrictions;
- Safe, no odor, no liquid leakage, sanitary and comfortable;
- High tech building products, modular design, factory manufacturing, on-site assembly, rapid construction and exquisite appearance, which can be built or transformed in situ;

### 应用领域 /APPLICATION AREA

- 城市配套
- 景区景点
- 乡镇乡村
- 机关学校
- 军民融合
- 高铁船舶
- CITY SET
- SCENIC SPOTS
- COUNTRY
- INSTITUTION SCHOOL
- CIVIL-MILITARY INTEGRATION
- TRAIN/SHIP



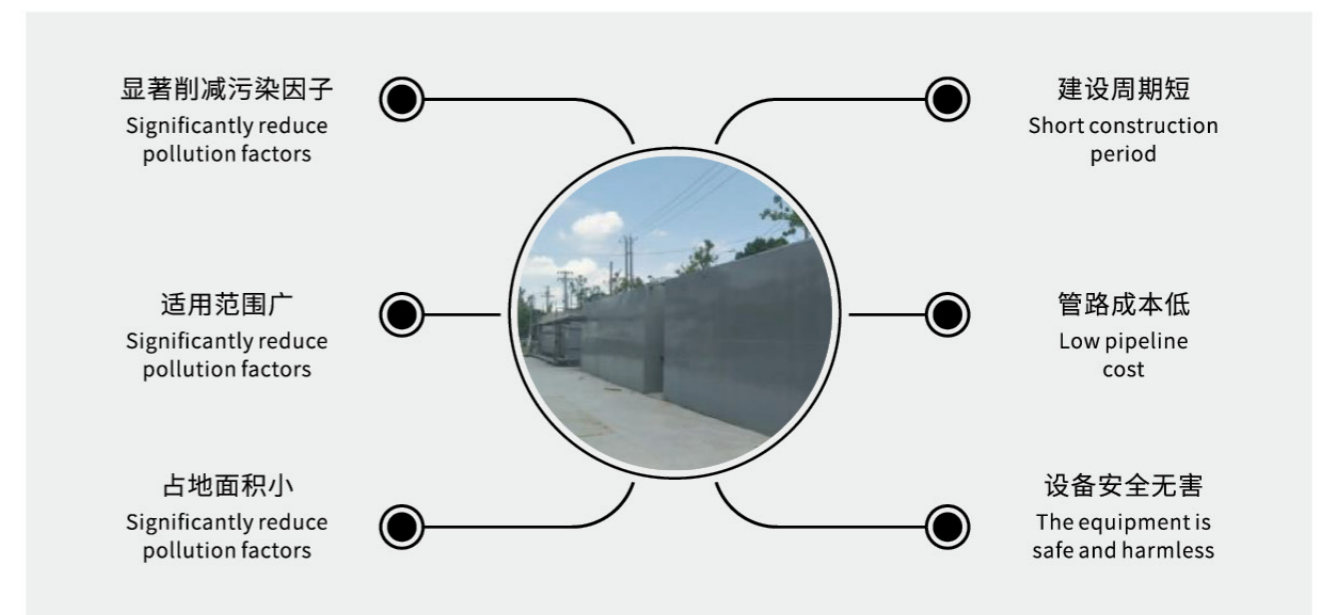
## MBBR 多元流动床

### 产品概述 /PRODUCT OVERVIEW

- 容积负荷高，紧凑省地
- 耐冲击性强，性能稳定，运行可靠
- 搅拌和曝气系统，操作方便，维护简单
- 生物池无堵塞，生物池容积得到充分利用，没有死角
- 使用寿命长，优质耐用的生物填料
- 曝气系统和出水装置可以保证整个系统长期使用而不需要更换，折旧率低
- 污染物去除率高，出水水质好
- 调试周期短，一般一周出水就能稳定达标
- High volume load, compact and land-saving
- Strong impact resistance, stable performance and reliable operation
- The mixing and aeration system is easy to operate and maintain
- There is no blockage in the biological pool, the volume of the biological pool is fully utilized, and there is no dead corner
- Long service life, high quality and durable biological filler
- The aeration system and water outlet device can ensure the long-term use of the whole system without replacement, and the depreciation rate is low
- High pollutant removal rate and good effluent quality
- The commissioning cycle is short. Generally, the effluent can reach the standard stably in one week



### 产品优势 /ADVANTAGE



## ULTRAFILTRATION EQUIPMENT

### 超滤设备

#### 产品概述 /PRODUCT OVERVIEW

超滤设备是一种以筛分为分离原理、以压力为推动力的膜分离过程，过滤精度在 0.005-0.01um 范围内，可有效去除水中的微粒、胶体、细菌及高分子有机物的装置。

Ultrafiltration equipment is a membrane separation process based on the principle of sieve separation and driven by pressure. The filtration accuracy is within the range of 0.005-0.01um, which can effectively remove particles, colloid, bacteria and polymer organic matter in water.

#### 功能 /FUNCTION

可广泛应用于物质的分离、浓缩、提纯。

It can be widely used in separation, concentration and purification of substances.



#### 应用领域 /APPLICATION AREA

- 工业废水深度处理，城市中水回用系统，电泳漆、油品的回收。
- 生化发酵液分离与精制、酶的浓缩与精制、糖及木糖醇澄清过滤。
- 在医药和生物化工生产中，常需要对热敏性物质进行分离提纯。
- Industrial wastewater advanced treatment, urban water reuse system, electrophoretic paint, oil product recovery.
- Biochemical fermentation broth separation and refining, enzyme concentration and refining, sugar and xylitol clarification and filtration.
- Separation and purification of heat-sensitive substances are often required in pharmaceutical and biological chemical production.

## ULTRAFILTRATION EQUIPMENT

### 超滤设备

#### 产品概述 /PRODUCT OVERVIEW

采用两种以上的介质作为滤层的介质过滤器，在工业循环水处理系统中，用以去除污水中杂质、吸附油等，使水质符合循环使用的要求。

Using more than two kinds of media as filter layer medium filter, in the industrial circulating water treatment system, to remove impurities in sewage, adsorption oil, so that the water quality meets the requirements of recycling.

#### 功能 /FUNCTION

去除水中的泥砂、悬浮物、胶体等杂质和藻类等生物，降低对反渗透膜元件的机械损伤及污染。

It can be widely used in separation, concentration and purification of substances.



#### 应用领域 /APPLICATION AREA

- 渗透、电渗析、超滤等系统的预处理
- 发电、造纸、饮料等的原水前期过滤处理
- 化工厂给水的脱色、去有机物
- 生活用水预处理
- 地表水、地下水降浊除色
- Pretreatment by osmosis, electrodialysis, ultrafiltration and other systems
- Early filtration treatment of raw water for power generation, papermaking, beverage, etc
- Chemical plant water decolorization, removal of organic matter
- Domestic water pretreatment Surface water, groundwater to reduce turbidity and color.



## REVERSE OSMOSIS EQUIPMENT 反渗透设备

### 产品概述 /PRODUCT OVERVIEW

反渗透设备是将原水经过精细过滤器、颗粒活性炭过滤器、压缩活性炭过滤器等，再通过泵加压，利用孔径为 1/10000 $\mu$ m 的反渗透膜，使较高浓度的水变为低浓度水，同时将工业污染物、重金属、细菌、病毒等大量混入水中的杂质全部隔离，从而达到饮用规定的理化指标及卫生标准。

Reverse osmosis equipment is the raw water through fine filter, particle activated carbon filter, compressed activated carbon filter, and then through the pump pressure, the use of pore size 1/10000 $\mu$ m reverse osmosis membrane, the higher concentration of water into low concentration water, at the same time industrial pollutants, heavy metals, bacteria, viruses and a large number of impurities mixed with the water all isolation, So as to achieve the physical and chemical indicators of drinking and health standards.



### 功能 /FUNCTION

提高水质的纯净度，清除水中含有的杂质和盐。

Improve the purity of water, remove impurities and salt contained in the water.

### 应用领域 /APPLICATION AREA

- 半导体行业超纯水处理，化工及制药行业的纯水处理。
- 海水淡化冶金行业废水处理
- Semiconductor industry ultra pure water treatment, chemical and pharmaceutical industry pure water treatment.
- Seawater desalination, metallurgical industry wastewater treatment.

## HIGH SPEED FILTER 高速过滤器

### 产品概述 /PRODUCT OVERVIEW

高速过滤器是现代工业水处理的主要装置之一。高速过滤器非常适用于钢铁企业中净化处理轧钢，连铸的浊水（含有氧化铁皮及油质），以及循环系统中旁滤处理。

High speed filter is one of the main devices of modern industrial water treatment. High speed filter is very suitable for purifying and treating steel rolling, continuous casting muddy water (containing oxide sheet and oil) in iron and steel enterprises, as well as by-filter treatment in circulation system.

### 功能 /FUNCTION

海水淡化，大分子物质的脱盐浓缩。

Desalination of sea water, desalting concentration of macromolecular substances.

### 应用领域 /APPLICATION AREA

- 污水、工业废水及中水回用的处理
- 中水、自来水厂、矿泉水厂等的饮用水的过滤处理；
- 发电厂、钢铁厂等的冷却、循环水或其它工业用
- Treatment of sewage, industrial wastewater and reclaimed water;
- Filtration treatment of drinking water of reclaimed water, water plant, mineral water plant, etc.;
- Power plant, steel plant cooling, circulating water or other industrial water filtration.



## ION EXCHANGE UNIT 离子交换装置

### 产品概述 /PRODUCT OVERVIEW

离子交换装置主要指进行离子交换的反应器，也将装有交换剂的交换器称床。离子交换装置作为水处理设备，用于水的软化和高纯水的制备。离子交换树脂是离子交换反应的载体，可将水中的绝大部分离子去除，实现水的脱盐、提纯的目的。

The ion exchange device mainly refers to the reactor for ion exchange, and also the exchanger with the exchanger bed. As water treatment equipment, ion exchange device is used for water softening and preparation of high purity water. Ion exchange resin is the carrier of ion exchange reaction, which can remove most of the ions in water and achieve the purpose of water desalination and purification.



### 功能 /FUNCTION

硬水软化，制备高纯水。

The hard water is softened to prepare high purity water.

### 应用领域 /APPLICATION AREA

- 食品、饮料及制药行业的除盐。
- 有机废水回收重金属离子。
- 纺织废水的前道处理
- Salt removal in the food, beverage and pharmaceutical industries.
- Recovery of heavy metal ions from organic wastewater.
- Pretreatment of textile wastewater.

## BIOFILTER 生物滤塔

### 产品概述 /PRODUCT OVERVIEW

生物滤塔是一种新型的生物污水处理设备，其专利纳米陶瓷载体 (Nano Ceramic Media) 能提供最适合微生物生长的环境，利用微生物代谢原理，快速降解 BOD、COD、与水中氨氮浓度，无须使用曝气机，低耗能、高效率，更能大幅提升空间利用率，是划时代的新产品。

The biofilter is a new type of biological sewage treatment equipment. The patent Nano Ceramic Media can provide the most suitable environment for microbial growth. By using the principle of microbial metabolism, the biofilter rapidly degrades BOD, COD, and ammonia nitrogen concentration in water without the use of aerator, featuring low energy consumption and high efficiency. More can greatly improve the utilization of space, is an epoch-making new product.

### 优势 /ADVANTAGE

- 运行简单
- 低产泥，低能耗，低耗材
- 模块化，耐高有机负荷及油脂 FOG
- 耐水质水量冲击
- 快速启动，安装简单
- 低运营人员技术要求，同步好氧 & 厌氧

### 工程案例 /ENGINEERING CASE



### 特点 /CHARACTERISTIC

- 控制系统包括 PLC, HMI 及其他
- 循环槽底部斜板设计更易去除污泥
- 进水流量监控保证稳定进水
- 独立液压控制
- 集成二级处理
- pH 调节系统
- 专利防堵塞 HydroSwirl™ 布水系统

Control system includes PLC, HMI and others, Circulating tank bottom inclined plate design is easier to remove sludge, Water inlet flow monitoring ensures steady water inlet, Independent hydraulic control, Integrated secondary processing, pH regulating system, Patented Clog-Proof HydroSwirl™ Distribution System.

Simple operation, Low yield mud, low energy consumption, low consumables

Modular, resistant to high organic load and grease FOG, Resistance to water and water impact, Quick start and easy installation, Low operating personnel technical requirements, simultaneous aerobic and anaerobic.

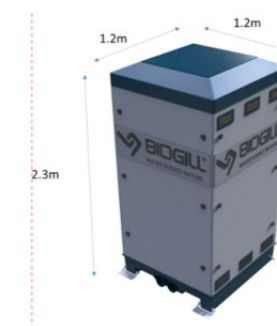


图1 产品外观

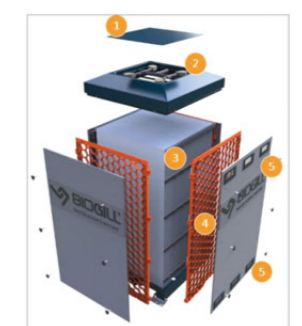


图2 分解示意图

#### 系统构造

- |           |        |
|-----------|--------|
| 1. 顶盖     | 4. 支撑网 |
| 2. 布水器    | 5. 通风口 |
| 3. 纳米陶瓷载体 |        |

## INTEGRATED AIR FLOAT OIL REMOVAL EQUIPMENT

### 一体化气浮除油设备

#### 产品概述 /PRODUCT OVERVIEW

一体化气浮除油设备主要是将气池、溶气罐、溶气水泵、投药设备和空压机或射流器有机地组合一体。

这样的集成，占地面积小，操作方便，且不需做基础，也可缩短安装时间，减少工作量。

Integrated air float oil removal equipment is mainly a gas tank, dissolved gas tank, dissolved gas pump, dosing equipment and air compressor or jet device organic combination.

Such integration, covers an area of small, easy to operate, and does not need to do the foundation, can also shorten the installation time, reduce the workload.

#### 功能 /FUNCTION

一体化气浮除油设备主要起除油、固液分离作用（同时可以降低 COD、BOD、色度等）。一体化气浮除油设备主要利用溶气系统产生的溶气水中的微气泡，与水中的油脂、悬浮物絮体粘合在一起，随微气泡一起上升至水面，形成浮渣，使水中的油脂、悬浮絮体得到去除。

该设备用户单位只要接上调节好 PH 值的污水到进出等管口，一经调试好后，正常运行，不需专人管理，运行基本达到自动化无人管理状态。

#### 应用领域 /APPLICATION AREA

- 它应用于电镀、印染、食品、屠宰、炼油、废水的油脂、化工、造纸废水及生活饮用水方面。

- It is used in electroplating, printing and dyeing, food, slaughter, oil refining, waste oil, chemical industry, paper waste water and drinking water.

Integrated air float oil removal equipment mainly plays the role of oil removal, solid-liquid separation (while reducing COD, BOD, chroma, etc.). The integrated air floating oil removal equipment mainly uses the micro-bubbles in the dissolved air water produced by the dissolved air system to bond with the oil and suspended floc in the water, and then rise to the water surface together with the micro-bubbles to form scum, so that the oil and suspended floc in the water can be removed.



## HIGH DENSITY SEDIMENTATION TANK 高密度沉淀池

### 产品概述 / PRODUCT OVERVIEW

高效沉淀池设计非常紧凑，它把混凝池、絮凝池、沉淀池和污泥浓缩集于一体。高密度沉淀池，借助于污泥循环和投加聚合物，表面负荷可以达到 15-25m/h。

The design of high-efficiency sedimentation tank is very compact. It integrates coagulation tank, flocculation tank, sedimentation tank and sludge concentration. With the help of sludge circulation and polymer addition, the surface load of high-density sedimentation tank can reach 15-25m/h.



### 功能 / FUNCTION

去除悬浮物、胶体、石灰纯碱法去除硬度、除磷、除氟、除硅、除重金属离子、去除部分 COD。

Remove suspended solids, colloids, lime and soda ash, remove hardness, phosphorus, fluorine, silicon, heavy metal ions and some cod.



### 应用领域 / APPLICATION AREA

- 原水预处理沉淀、软化、污水一级加强沉淀
- 污水深度处理、市政中水回用、雨水处理
- 循环水旁滤、零排放前段预处理、河道、流域治理
- Sedimentation and softening of raw water pretreatment and primary enhanced sedimentation of sewage
- Advanced sewage treatment, Municipal Reclaimed Water Reuse and rainwater treatment
- Circulating water by-pass filtration, zero discharge front section pretreatment, river and watershed treatment



**注：**表示已设立销售网点及覆盖区域  
**Note:** means have set sales network and cover area in above picture

### 质量保证及售后服务承诺

#### Commitment to Quality Guarantee and After-sale Service



品质承诺



安装承诺



服务承诺

我公司产品的设计、制造、试验全过程受控于 ISO9001-2008 质量保证体系。

质保期：自货到现场验收合格之日起 12 个月，质保期内实行“三包”，如有质量问题，供方派人协助处理，确保设备正常运行，终身维护。

需协助方联合设计并派技术人员现场指导安装调试，保证设备正常运行。

需技术培训操作、维护人员。

质量故障的处理：设备运行中如发现质量问题，接信息后立即答复，依据远近距离，在 4~36 小时内到达现场处理，直至问题解决为止。

长年供应备品备件。

The whole process of our products' design, manufacture, test are under control of the ISO9001-2008 quality management system.

The product warranty: Our company has three-guarantee service and permanent maintenance policy. The three-guarantee service is guarantee for repair, refund and change of goods sold to customers during 12 months after acceptance test.

Associating clients to design and dispatching our technicians to engineering site assisting installation. Offering clients technical training for operation and maintenance of the products.

If any quality problems are reported, we will reply to it immediately. According to the distance and proximity, we will arrive at the site within 4~36 hours to deal with it until the problem is solved. Guarantee spare parts supply.